



# BackTrak

## User Guide

Version 1.0

March 2026

Scott Daughtry

Software by Daughtry

*Complexity Made Simple*

# Contents

Version History	3
Introduction	4
System Requirements	4
Windows 8 (or higher)	4
U.S. Government Use	4
Quick Start	4
Whitelisting	5
How It Works	5
Output	6
Technical Information	7
Data Backup	7
Support and Registration/Donation	7

## Version History

Version	Description
1.0	Initial release

## Introduction

This utility application was created after the author endured a multi-month data restoration project. A Microsoft Storage Spaces array experienced an NTFS failure that renamed thousands of files to numeric-only names (e.g., 5167254.3278).

Because the backup process mirrored the corrupted source, both the primary and backup arrays became equally compromised.

When NTFS partially fails and the Master File Table is damaged, files may remain intact but are renamed to numeric values—making identification and recovery extremely difficult.

## System Requirements

- Windows 8 (or higher)
- All Windows applications “like” computer memory – a starting point for any Windows machine should really be 16GB of memory. If this application starts running slower, check your Windows Task Manager for applications that are leeching memory (and then start closing them)
- This application runs comfortably within 10MB of disc space
- A decent color monitor capable of displaying 1024x768 (or higher resolution)
- The VoidTools “Everything (es.exe)” free software application is required – we’ve included the full distribution of this excellent search engine tool with our app

## U.S. Government Use

U.S. government agencies, to include the Department of Defense, are NOT permitted to use this application without written consent from the author. A per-seat usage fee will be assessed prior to that written authorization being granted to the requester.

## Quick Start

1. Place BackTrak.exe and es.exe in the same folder.
2. Configure BackTrak.ini with scan paths.
3. Launch BackTrak.
4. Select a path and execute scan.
5. Review output file for results.
6. Configure the BackTrak.Ini file

---

```
[ScanPaths]
Paths=g:\|v:\|g:\boots|e:\My documents

[Settings]
PromptLaunchOnClean=1
AllowProceedAnyway=1

[Synchredible]
Exe=C:\Program Files\ASCOMP Software\Synchredible\Synchredible.exe
Args=
WorkDir=C:\Program Files\ASCOMP Software\Synchredible
```

**note:** Paths are separated by the pipe (|) character.

The individual .Ini configuration options:

### Paths

List of drives or folders to scan.

Format: g:\|v:\|g:\boots

### PromptLaunchOnClean

Controls confirmation prompt behavior when no issues are found.

Values:

- 0 = Standard prompt
- 1 = Alternate prompt wording

### AllowProceedAnyway

Determines behavior when anomalies are detected.

- 0 = Block execution
- 1 = Allow execution

If no anomalies are found, your backup process proceeds normally. If anomalies are detected, you are alerted before execution.

## Whitelisting

BackTrak uses a second file (Backtrak\_Whitelist.txt) that YOU will populate with folders or filenames, comprised 100% of numbers, that are valid. This feature allows you to define known “valid” numeric filenames or folders. Matches found in this file will be excluded from warning prompts.

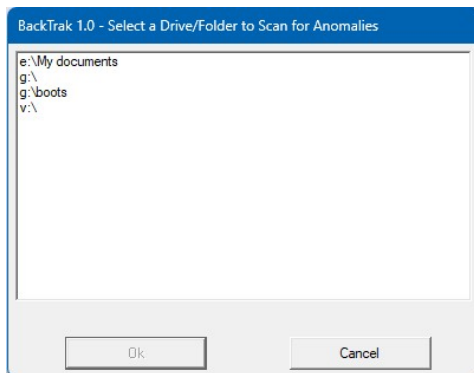
## How It Works

BackTrak leverages the Everything Command Line Interface [CLI] (es.exe) to perform

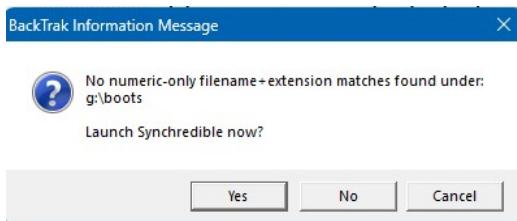
high-speed NTFS searches using a specific regex string to identify filenames and their file extensions comprised entirely of numbers:

`^[0-9]+\.[0-9]+$`

When the BackTrak application starts, a popup window is displayed to select the drive (or parent folder) to scan for anomalies (via the Everything CLI tool):



Select a path from the list and click OK to proceed if no numeric filenames+file extensions were returned by the Everything CLI:



The author uses the Synchredible backup software application to mirror a hard drive (or a specific path) to a secondary external hard drive (for data redundancy purposes), as defined within the BackTrak.Ini file.

The BackTrak results are written to a text file for review.

## Output

A file named BackTrak\_numeric\_hits.txt [written to the same folder that the BackTrak.Exe file is located] is generated containing all number-only matches (filename + file extension). This file can be reviewed before proceeding with backup operations.

## Technical Information

This application requires less than 5MB of disc space for its files:

- BackTrak.exe – application file
- BackTrak.ini – configuration file (editable with Notepad or a text editor)
- WBDZA64I.DLL – runtime file
- ES.Exe – the Everything CLI file

However, whenever processing large volumes of data, three factors come into play:

1. CPU processor speed
2. Hard drive type/speed (5400RPM / 7200RPM / SSD)
3. Available memory (ideally 16GB or more RAM installed)

It is recommended to close all Windows applications (especially web browsers) before processing large amounts of data to free up memory. A faster hard drive can shave minutes (or even hours) of time required to process data.

## Data Backup

Whenever processing raw data, it is ALWAYS a prudent decision to first back up the original data and work against a copy of the data. For example, the machine could automatically reboot due to an operating system update or a software driver update requires the reboot the machine to replace open files. A co-worker could accidentally bump the machine's reboot button, or toggle the surge protector's power switch with a broom. There are dozens of ways to interfere with data processor – and it will ALWAYS occur at the worst possible time.

## Support and Registration/Donation

1. Send us an email ([scott@sdaughtry.com](mailto:scott@sdaughtry.com)) that fully describes the problem(s) you're experiencing and we will get back to you as soon as possible. It is prudent for you to fully back up this application's folder (in full) as a precautionary pre-troubleshooting step.
2. This application is distributed as DONORWARE – no features have been removed or crippled from this application. This application's dedicated web page located on our company web site (<http://www.sdaughtry.com>) has a link to donate to continued updates of this application and/or fund the creation of other utility applications.