



DirTrak

User Guide

Version 1.7

March 2026

Scott Daughtry

Software by Daughtry

Complexity Made Simple

Contents

Version History	3
Introduction	4
Safeguards	4
System Requirements	4
U.S. Government Use	5
Quick Start	5
How It Works	5
Screen Captures	6
Main Window	6
Folder Creation Window	6
Technical Information	10
File Manager Integration	11
DoubleCommander	11
FreeCommander	11
SpeedCommander	13
Total Commander	16

Version History

Version	Description
1.7	<ul style="list-style-type: none">• Bug Fix: Autodisplay the suffix text picklist fixed
1.6	<ul style="list-style-type: none">• Bug Fix: cycling through case options did not update the Creating text display string• Slightly reduced the height of the primary screen• Increased length of the Suffix Text entry field from 30 to 50 characters• Reduced the size of the application main window• Added capability to auto-display the Suffix Text droplist• Added a second suffix entry field after the droplist for additional suffix text
1.5	<ul style="list-style-type: none">• Fixed bug that prevented a period or brace symbols from use in the new directory name• Changed call from Ictips Utilities to WinEvent to create the folder to fix period error
1.4	<ul style="list-style-type: none">• Changed compile mode from DLL to LIB to remove .DLL runtime file dependency• Changed the application icon
1.3	Increased width of the suffix lookup table from 30 to 50 characters
1.2	Enabled the use of a period (.) symbol within the new folder name
1.1	<ul style="list-style-type: none">• Checked directory creation status return value; added error message box if creation failed• Lengthened suffix field/entry field from 30 characters to 50 characters• Changed text color on Why DirTrak tab from white to red
1.0	Initial release

Introduction

DirTrak is a Total Commander add-in utility program which adds a popup window to create a new directory within the currently selected folder within Total Commander and other Windows file management software that permits the currently active directory name to be passed as a variable to an external Windows application. The popup window separates a suffix name (useful for naming convention compliance/continuity) to be separated from the directory name and the new folder name's case can be defined as lowercase, proper case, uppercase or left "as-is". Characters not permitted by Windows to be used in directory/file names are automatically stripped from the final name to prevent errors.

DirTrak has two 'modes' of operation. When DirTrak is **NOT** passed a folder name as parameter then the main DirTrak window is displayed onscreen, which permits you to access DirTrak's menu. If a folder name parameter **IS** passed to DirTrak the main window is **NOT** displayed onscreen – the directory creation window is displayed only. After DirTrak has created the new folder, DirTrak is completely closed and control is passed back to Total Commander.

Note: DirTrak was developed with Clarion version 11, which still does not support Unicode. Non-ASCII characters cannot be handled correctly by the language – meaning that a folder name that contains Unicode formatted characters will be translated to a different character by the language and it can't be created via DirTrak.

Safeguards

DirTrak will abandon the directory operation if either of these conditions exist:

1. A file or folder of the new name already exists in the selected folder
2. The new path+folder name exceeds 259 characters (because Windows max preferred path length for a file or folder is 260 characters without causing major problems)

System Requirements

- Windows 8 (or higher)
- All Windows applications "like" computer memory – a starting point for any Windows machine should really be 16GB of memory. If this application starts running slower, check your Windows Task Manager for applications that are leeching memory (and then start closing them)
- This application runs comfortably within 10MB of disc space

- A decent color monitor capable of displaying 1024x768 (or higher resolution)

U.S. Government Use

U.S. government agencies, to include the Department of Defense, are NOT permitted to use this application without written consent from the author. A per-seat usage fee will be assessed prior to that written authorization being granted to the requester.

Quick Start

DirTrak is simple to implement. Install the application to a dedicated folder. All DirTrak configuration options are displayed in the popup DirTrak window. Configuration settings are automatically saved to the DirTrak.ini file when DirTrak closes.

How It Works

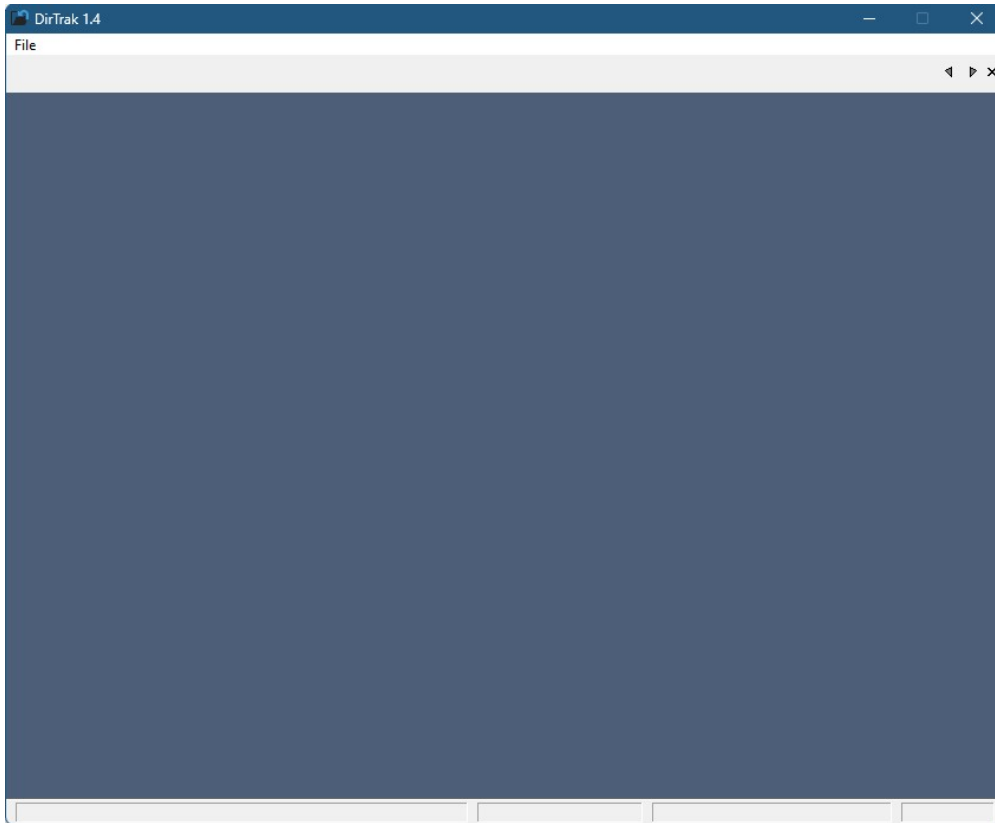
When DirTrak is started via a file manager application, the following actions occur:

1. DirTrak.ini file is opened and saved settings are loaded into memory
2. The parameter passed by the file manager application is evaluated/processed to determine if a folder name was passed to it. If a folder name was passed, the path components of the passed string are loaded into variables
3. The variables are preloaded into the onscreen entry fields and display strings
4. The Filename Case droplist is changed to reflect the DirTrak.ini saved value
5. The user (aka: you) enter the new folder name into the onscreen entry field
6. When the MAKE NEW DIRECTORY button is pressed (or the Enter key is pressed, which automatically 'clicks' the MAKE NEW DIRECTORY button, the entered folder name case is converted as instructed by the Filename Case droplist value; the individual components are pieced back together
7. The pieced folder name is then checked for its existence in the current path – if it exists, a popup error window is displayed onscreen and DirTrak terminates without completing the folder creation operation
8. If the pieced together folder name length exceeds 259 total characters a popup error window is displayed onscreen and DirTrak terminates without completing the folder creation operation
9. If the new folder name does not exist in the current path and the total length is less than 259 total characters, the folder creation operation is completed
10. DirTrak closes and full control is passed back to the file manager application

Screen Captures

Main Window

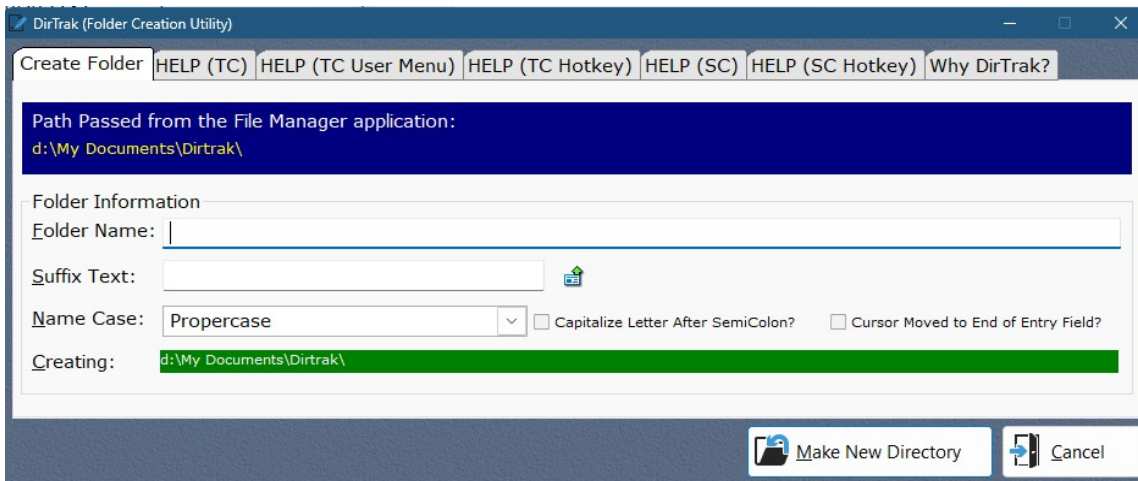
The DirTrak window is simple, with a standard Windows pulldown menu that can be executed with the mouse or keyboard:



The main window's menu options are purposely small, with the two important menu options being File->About and File->Exit.

Folder Creation Window

If a parameter (e.g. D:\Music\) is passed to DirTrak, the main DirTrak window is bypassed and the main folder creation window is displayed onscreen:

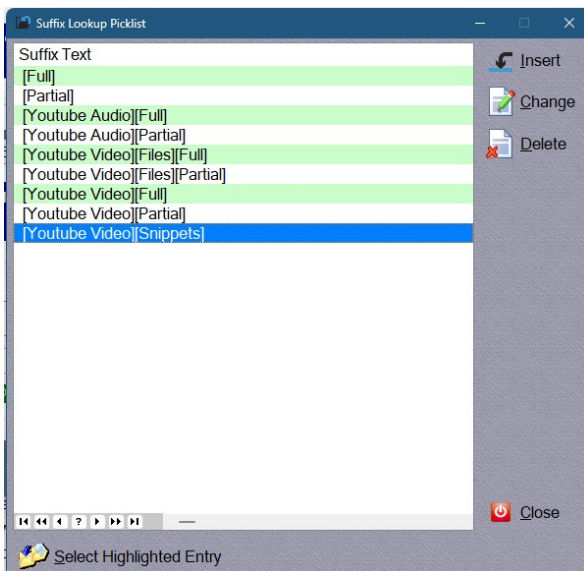


The folder name entry field accommodates 120 characters – this limitation ensures that the full pathname + folder name does not exceed the Windows length limitation.

The Suffix Text entry field isn't *really* an entry field – it is linked to a special DirTrak database that stores predefined text that is appended to the end of the Folder Name. A folder name suffix is *not* mandatory – you may skip over this entry field altogether if that is the case. There are two methods of displaying the contents of the Suffix Text database when this entry field has focus:

1. Press the Alt-DownArrow keys together
2. Click the icon displayed to the right of the entry field

When accessed, the Suffix Text popup window resembles this:



Displayed to the right of the listbox that displays the saved database entries are buttons to Insert, Change, and Delete entries stored within that Suffix Text database. The listbox automatically sorts the entries in ascending alphabetic sequence.

To select a listbox entry, select the desired entry with the mouse or with the up/down keyboard keys and then either press the Enter key, click the button titled Select Highlighted Entry, or press the Alt-S keys simultaneously.

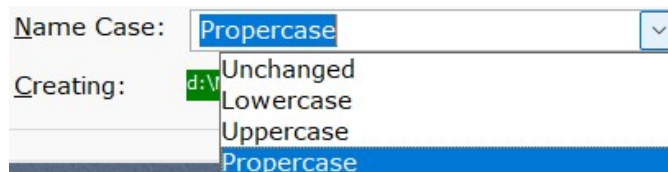
There is no limit to the number of Suffix Text database entries that you can create/store in its database.

There is an alternate method of selecting a Suffix Text database entry without displaying the popup window – when the Suffix Text entry field has focus, the Up and Down arrow keys will cycle through the database entries and enter the value into the entry field.

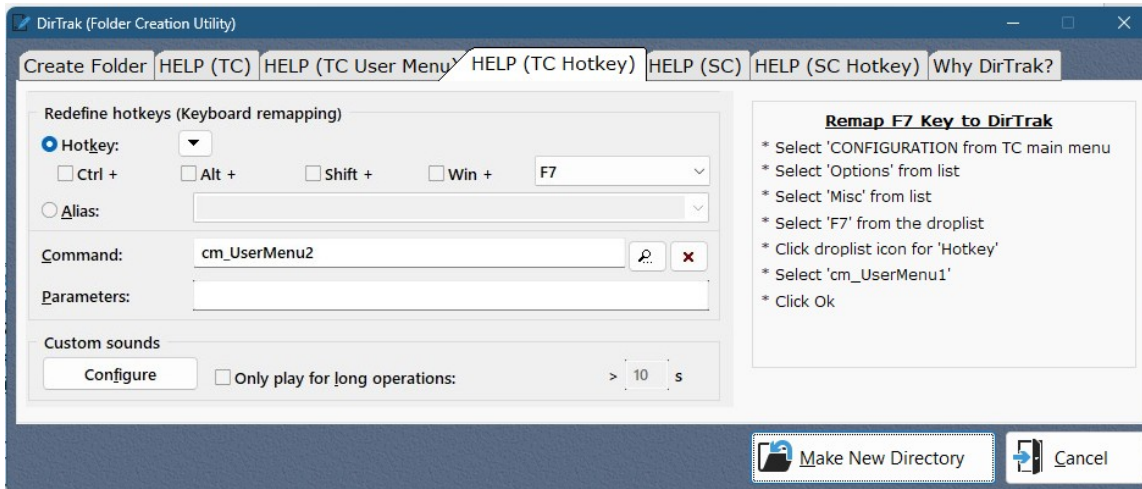
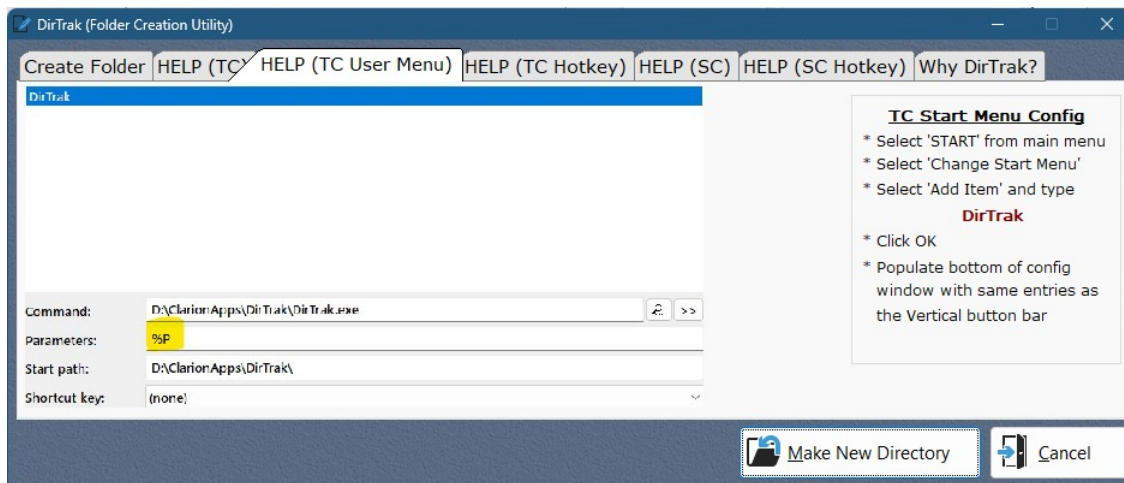
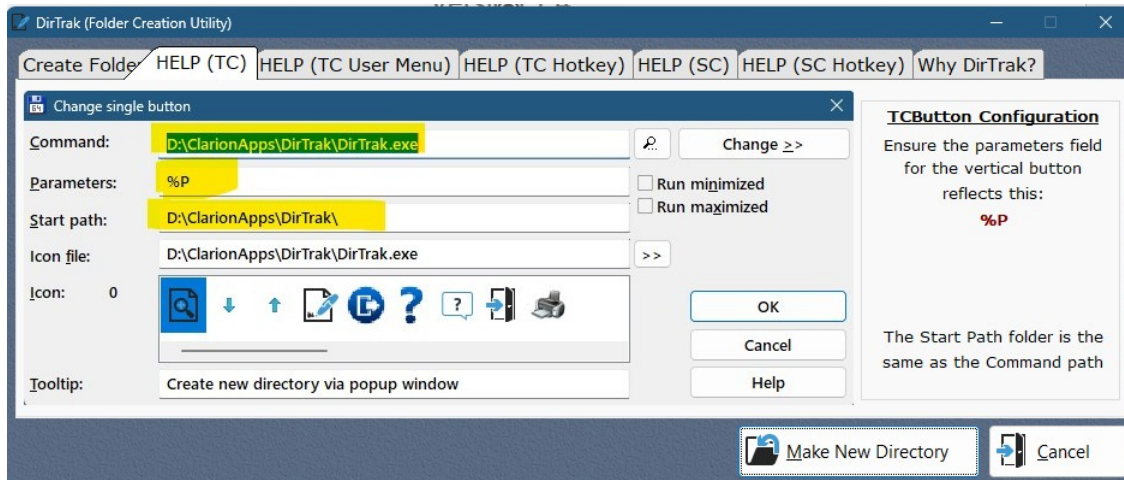
Suffix Text database entries can be defined “on-the-fly” during use, or the popup window can be accessed via the DirTrak main menu (File->Browse Suffix Text Picklist). Please note that the suffix text is appended to the folder name EXACTLY as it is stored within the Suffix Text database – in most instances, it is desirable (but not mandatory) to start off the Suffix Text with a blank space.

Two checkboxes (whose values are true if checkmarked and false if not checkmarked) will capitalize the character following a semicolon and determine where the cursor is placed within the folder name entry field when DirTrak initializes. The checkbox values (checked/unchecked) are saved to the DirTrak.INI file when the application is closed and retrieved when DirTrak initializes.

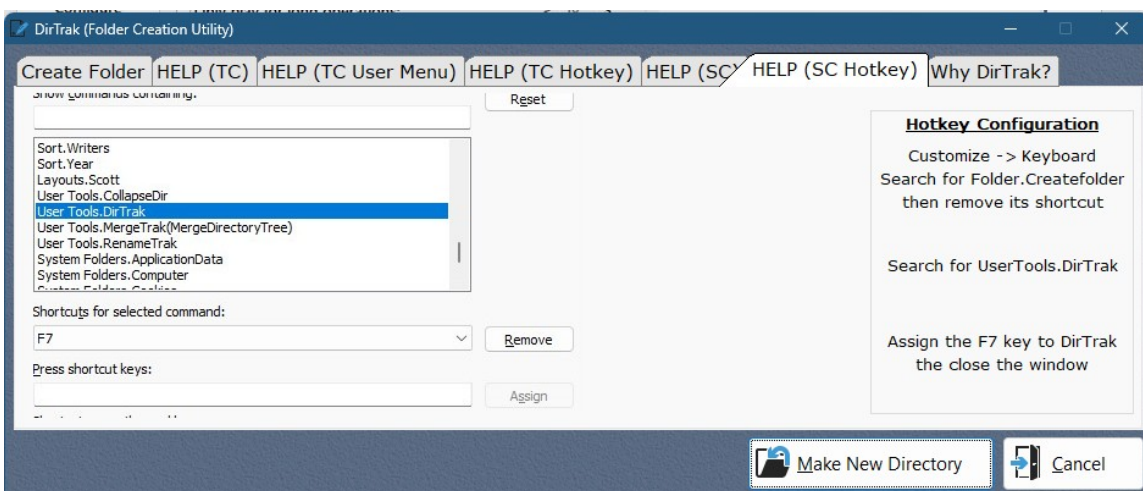
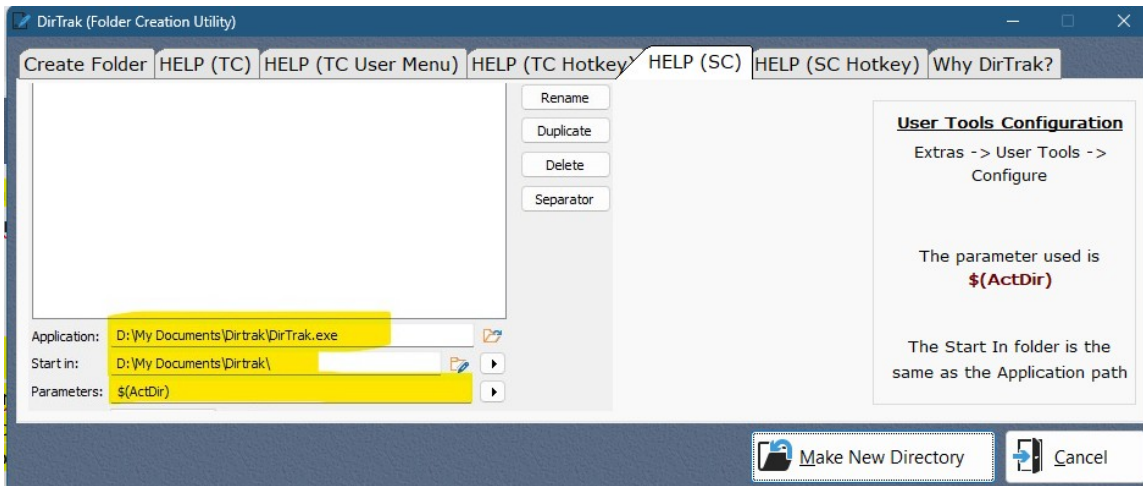
The name case droplist has four possible values and can be changed at any time:



Tabs 2-4 of the DirTrak window displays helpful information to (a) configure a Total Commander button to DirTrak and (b) how to assign the F7 key to DirTrak:



Tabs 5-6 of the DirTrak window displays helpful information to (a) configure a SpeedCommander button to DirTrak and (b) how to assign the F7 key to DirTrak:



Technical Information

This application requires less than 5MB of disc space for its files:

- DirTrak.exe – application file
- DirTrak.Ini – configuration file (editable with Notepad or a text editor)

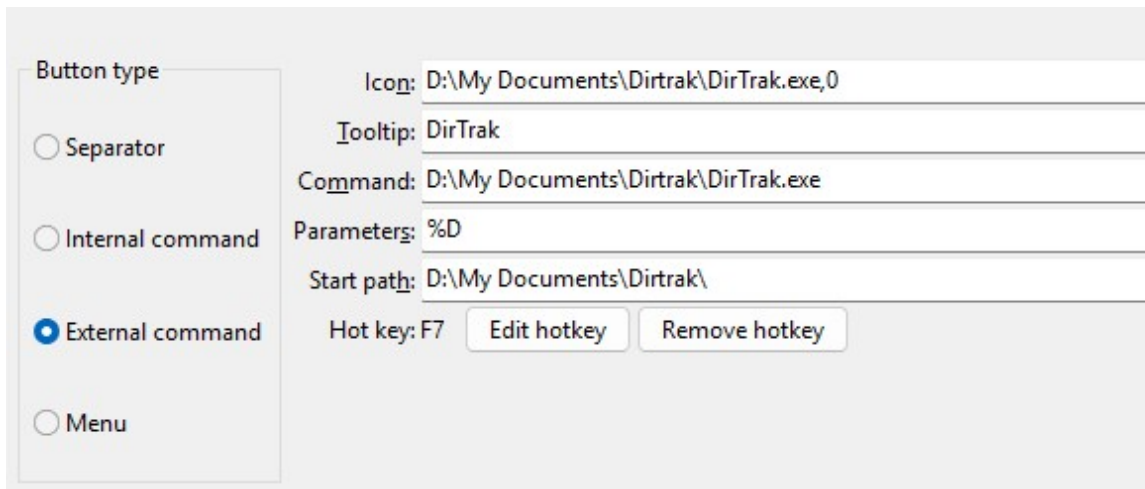
These files can be installed anywhere on your computer. The currently logged on Windows user must have **WRITE** security permissions to the installation folder make changes to the DirTrak.ini file. DirTrak requires about 3.0MB of disc space, plus the size of the user manual (which can be deleted if space needs to be reclaimed on your hard drive).

File Manager Integration

Listed below are step-by-step instructions on integrating DirTrak into several popular file manager applications:

DoubleCommander

1. Right click on an empty space within the vertical toolbar; select EDIT
2. Add a new button to the toolbar; configure its settings to mimic this:



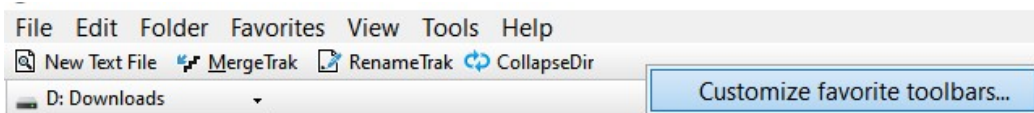
The important setting is the Parameter variable being passed: **%D**

The above screen capture shows the F7 key being assigned to the DirTrak application.

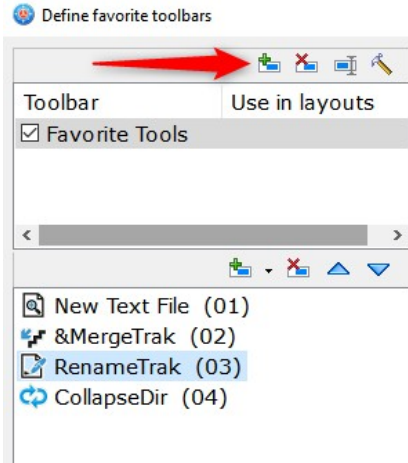
FreeCommander

DirTrak is easily integrated into FreeCommander; here is a series of screen captures that shows how this is done:

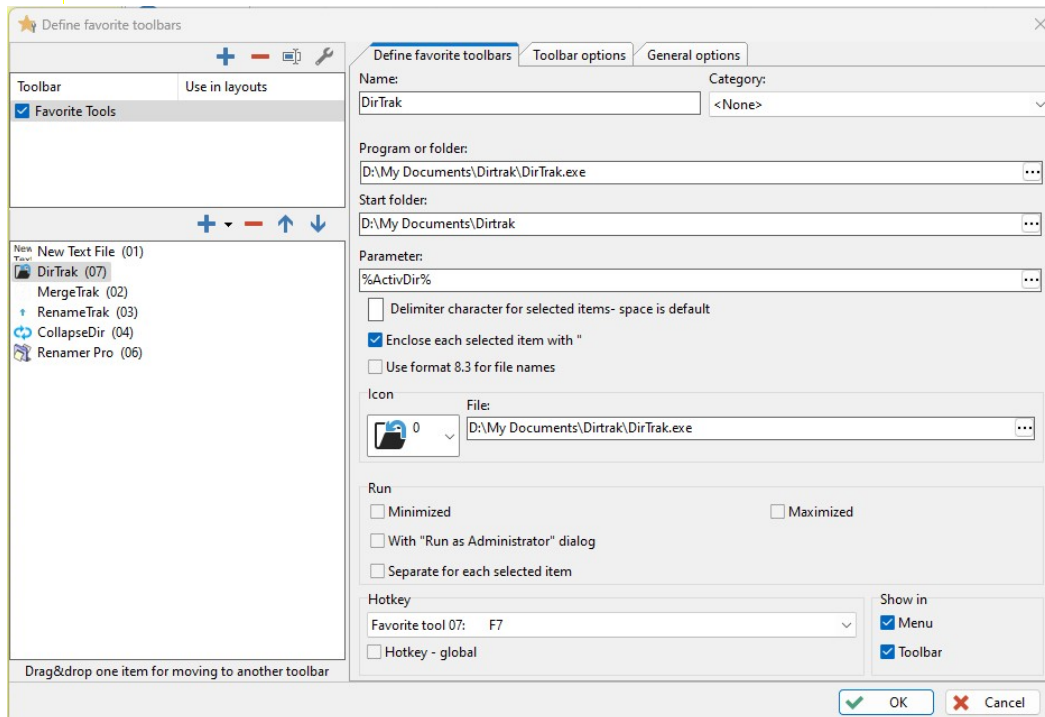
1. Open FreeCommander
2. Right click the mouse in the upper toolbar and select the popup menu item 'Customize favorite toolbars':



3. Click the icon with a "+" symbol to add a new Favorite shortcut to the FreeCommander toolbar:



4. Select the new Favorite and then populate the configuration options similar to this:



Name: This text is displayed in the toolbar

Program or Folder: Click the file selection button and navigate to where DirTrak is installed

Start Folder: Same as the DirTrak installation folder

Parameter: **%ActivDir%**

Icon File: Select the DirTrak executable and select icon #3 from the droplist (or your favorite icon)

Hotkey: Your choice to define a hotkey; I've configured the F7 key to execute DirTrak (which is defined as Favorite Tool 07 for my FreeCommander)

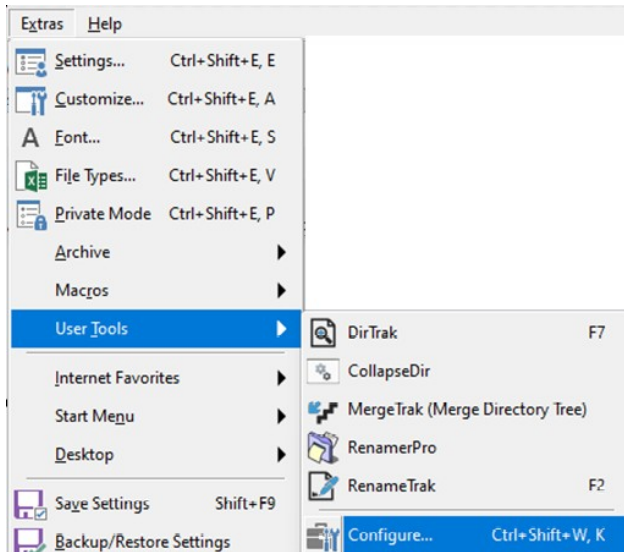
configuration)

Click OK to save the toolbar options. Don't forget to select 'Tools -> Save Settings' from the FreeCommander main menu to save all of the options to the FreeCommander settings file(s).

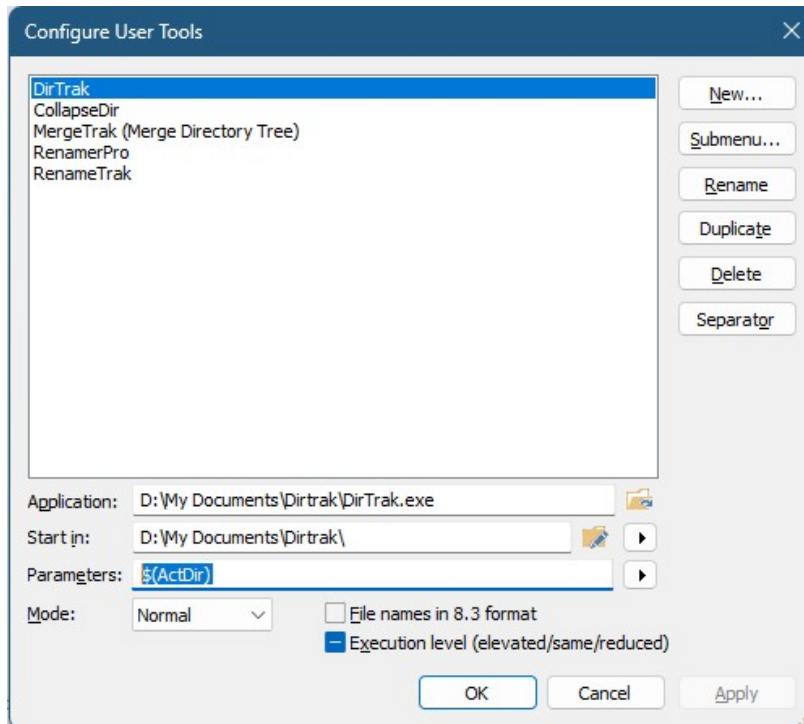
SpeedCommander

DirTrak can be integrated into SpeedCommander; here is a series of screen captures that shows how this is done:

1. Select EXTRAS, then USER TOOLS, then CONFIGURE from the main menu:

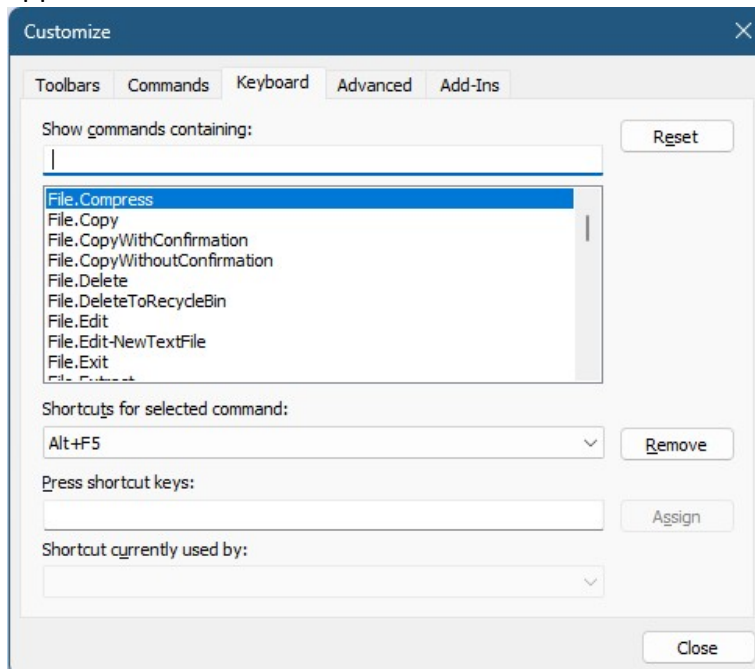


2. Select NEW from the popup window; enter DirTrak in the next popup to enter a User Friendly description, and then populate the values for the path to the .EXE file, the folder to start DirTrak within (the same location as the .Exe file). For the Parameters entry field, enter **\$(ActDir)**; the window will resemble something like this:

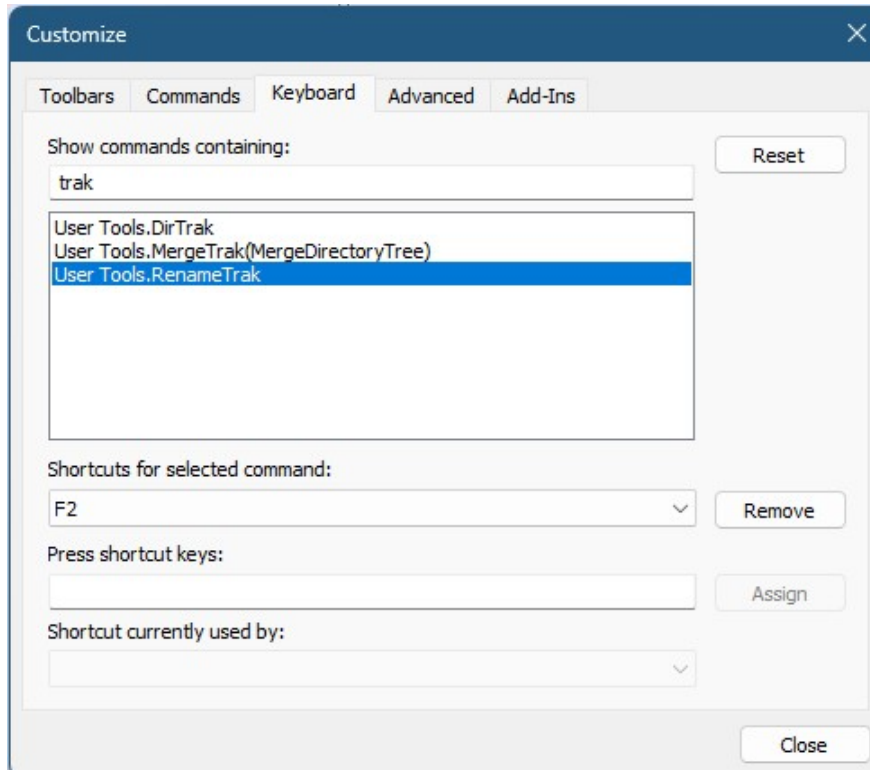


3. After populating the information, click APPLY then OK to save the new User Tool. I prefer using the F7 keyboard key to create a new folder – to assign SpeedCommander to use DirTrak when that key is pressed from within SpeedCommander:

4. Select EXTRA, then CUSTOMIZE from the main menu; this popup window will appear:

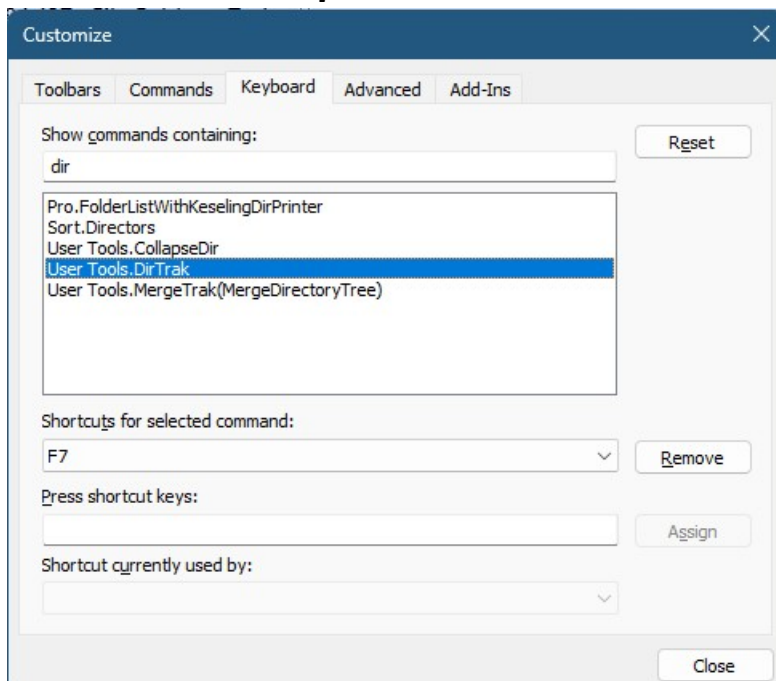


5. Select the KEYBOARD tab



Enter 'DirTrak' or 'Trak' (minus the quotation marks) to pinpoint the **User Tools.DirTrak** entry

6. Enter the desired hotkey combination or function key into the 'Shortcuts for selected command:' entry field, then click the Assign button [Note: you may need to remove the desired shortcut first if SpeedCommander is currently using it for another command] the final result will resemble:

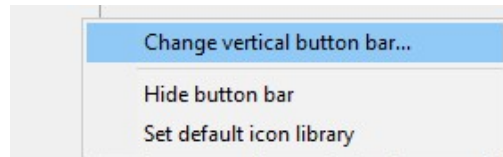


Total Commander

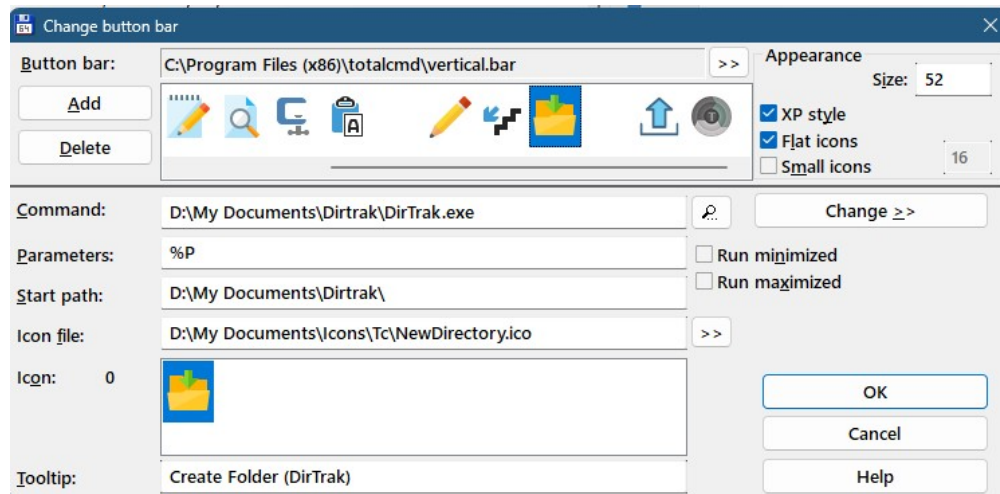
DirTrak is designed to be integrated into Total Commander (versus executed on its own). The parameter passed from Total Commander to DirTrak must be the full path+filename of the currently highlighted folder – Total Commander provides the required information via the combination of this predefined parameter: **%P**

Configuring Total Commander to use DirTrak is simple and takes 60 seconds to complete. You can configure Total Commander to use DirTrak via a button added to the vertical splitter bar and/or by pressing the F7 key

- a. Add a vertical button for DirTrak:
 1. Right click the mouse on the vertical splitter bar and select 'Change Vertical Button Bar' from the popup list of items:



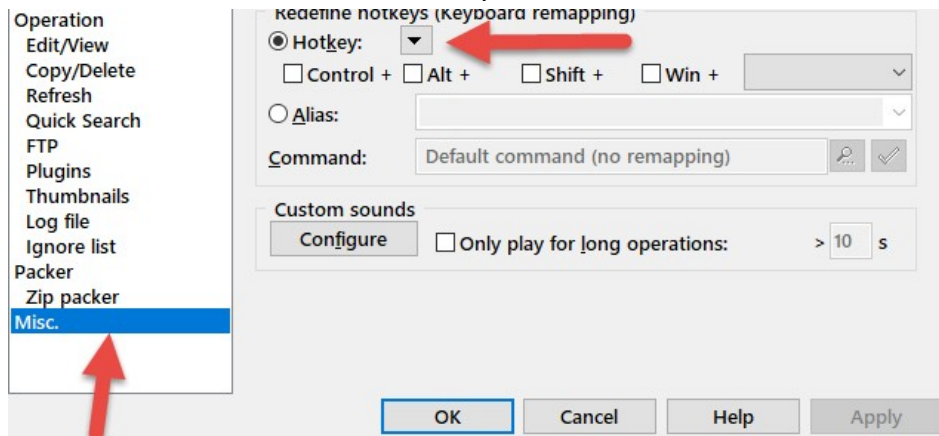
2. Click the ADD button and populate the button's configuration settings similar to this screen capture:



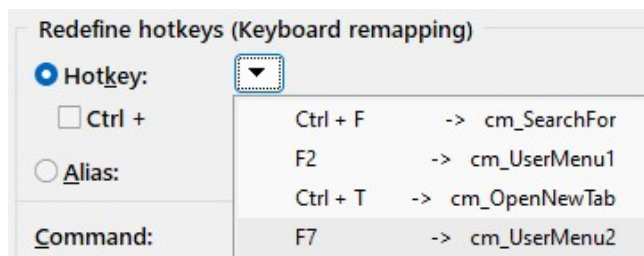
3. Click OK to save the newly added button's settings

- b. Assign the F7 hotkey for DirTrak:
 1. Click CONFIGURATION in the Total Commander main menu
 2. Select 'Options'
 3. Select 'Misc.'

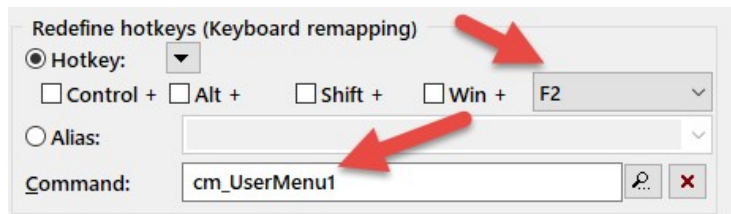
4. Click the button with a downarrow symbol:



5. From the droplist of key mappings select 'F7' and the applicable cm_UserMen<n> entry assigned to DirTrak:



6. The screen will now show the F7 key is assigned to the cm_UserMenu<n> assigned to DirTrak:



7. Click OK to close the window
8. Click CONFIGURATION in the Total Commander main menu
9. Click SAVE SETTINGS
10. Done

Support and Registration/Donation

1. Send us an email (scott@sdaughtry.com) that fully describes the problem(s) you're experiencing and we will get back to you as soon as possible. It is prudent for you to fully back up this application's folder (in full) as a precautionary pre-troubleshooting step.
2. This application is distributed as DONORWARE – no features have been removed or crippled from this application. This application's dedicated web page located on our

company web site (<http://www.sdaughtry.com>) has a link to donate to continued updates of this application and/or fund the creation of other utility applications.