



# MoveTrak

## User Guide

Version 1.0

May 2026

Scott Daughtry

Software by Daughtry

*Complexity Made Simple*

# Contents

Version History	3
Introduction	4
System Requirements	4
Installation	4
U.S. Government Use	5
Quick Start	5
Features	6
Performance Considerations	6
Configuration (Total Commander)	6
Configuration (FreeCommander)	10
Configuration (Double Commander)	15
Technical Information	16
How MoveTrak Works	16
Collision Detection	16
Error Messages	17
Support and Registration/Donation	17
Appendix A (FastCopy)	17
Appendix B (Why FastCopy?)	18
Closing Note	18

## Version History

Version	Description
1.0	Initial release

## Introduction

*“MoveTrak was designed for users who prefer collision detection over automatic folder merging. If a destination file or folder already exists, MoveTrak aborts the entire move operation before any data is transferred. This behavior helps protect large file collections from unintended merges.”*

Many file management applications permit data to be merged into an existing destination folder during copy and move operations.

For example, if a folder named:

Original

already exists in the destination location, some applications may automatically merge files from the source folder into the existing destination folder.

While this behavior may be desirable in certain situations, it can also result in unintended changes to a file collection if the merge was not expected.

MoveTrak was created to eliminate this risk.

Before any files or folders are moved, MoveTrak verifies that the destination does not already contain an item with the same name.

If a destination collision is detected, MoveTrak aborts the operation before moving any files or folders.

MoveTrak never performs automatic folder merges.

## System Requirements

- Windows 8 (or higher)
- 16GB RAM or more recommended when processing large volumes of data.
- This application runs comfortably within 10MB of disc space
- A decent color monitor capable of displaying 1024x768 (or higher resolution)
- FastCopy installed on your PC

## Installation

1. Copy MoveTrak.exe to a folder of your choice.

2. Launch MoveTrak once. The program will create: MoveTrak.ini

Edit MoveTrak.ini and verify the FastCopyEXE setting points to your installation of FastCopy.

## U.S. Government Use

U.S. government agencies, to include the Department of Defense, are NOT permitted to use this application without written consent from the author. A per-seat usage fee will be assessed prior to that written authorization being granted to the requester.

## Quick Start

Although the setup program installed this application into a dedicated folder, this application is meant to be copied into the same folder where the data resides:

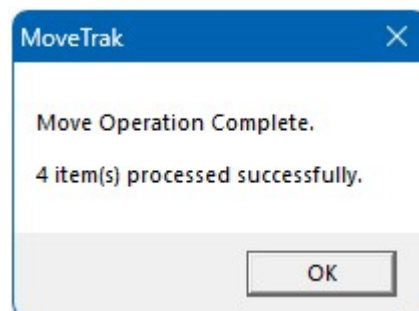
1. Create a dedicated folder on your hard drive, ensuring it has at least double the amount of hard drive space free and the MoveTrak size of the files it will manipulate.
2. MoveTrak.exe and MoveTrak.ini may be stored in any folder. The FastCopyEXE setting within MoveTrak.ini must point to a valid FastCopy installation.
3. Edit these highlighted MoveTrak.Ini file entries via Notepad (or a text editor):

[Settings]

```
FastCopyEXE=C:\Program Files (x86)\totalcmd\plugins\FastCopy Pro\FastCopy.exe  
ShowSuccessMessage=1
```

The 2<sup>nd</sup> line (beginning with FastCopyEXE) is the path to your installed copy of FastCopy.exe.

The 3<sup>rd</sup> line (beginning with ShowSuccessMessage) is a toggle; a value of 0 means do NOT display a popup message after data is moved. A value of 1 means display a popup message after data is moved (see image below):



## Features

- Moves files and folders (or a mixture of both)
- Supports multiple selected items
- Supports mixed file and folder selections
- Prevents folder merges
- Detects destination collisions
- Aborts before moving data when conflicts exist
- Uses FastCopy for high-speed transfers
- Optional success confirmation message
- Configuration options stored in MoveTrak.ini

## Performance Considerations

### Same-Drive Move Operations

When files or folders are moved between locations on the same NTFS volume, Windows may be able to complete the operation by updating file system metadata rather than physically copying every byte of data.

Because MoveTrak performs destination collision detection before launching FastCopy, users may notice a small amount of additional processing time compared to move operations performed directly within Windows Explorer or certain file managers.

This additional processing time is intentional and is the result of MoveTrak verifying that no destination collisions exist before any data is moved.

In exchange for this verification step, MoveTrak provides protection against unintended file and folder merges.

## Configuration (Total Commander)

There are two steps: add a Total Commander Start Menu entry (to enable a hotkey to be assigned to MoveTrak) and adding a middle toolbar button (optional).

1. Start Menu
  - a) Select "Start" from the Total Commander main menu
  - b) Select "Change Start Menu" from the pulldown menu
  - c) Click the "Add Item" button, then populate the three highlighted entry fields (Command, Parameters, Start Path)

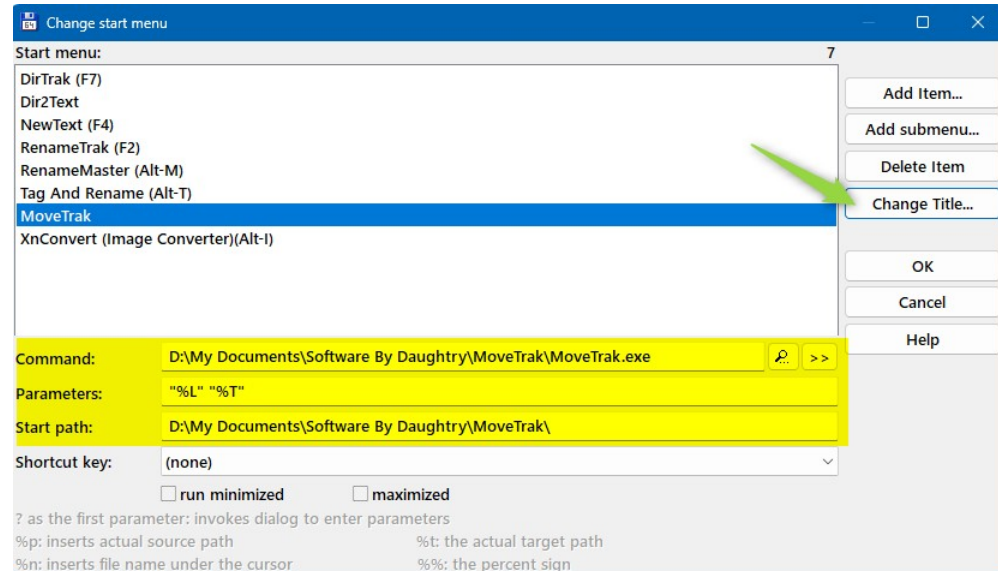
Command = click the "»" button to navigate to the folder where MoveTrak is

installed, then select the MoveTrak.Exe file to populate the entry field

Parameters = you MUST enter the text exactly as shown; here is the text that you can copy and paste directly into the entry field:

"%L" "%T"

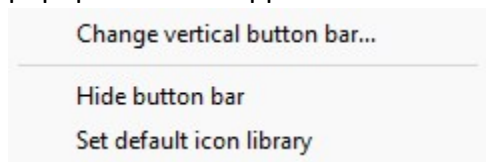
Start Path = The same path where MoveTrak is installed



- d) You may change the title of the new Start Menu item by clicking the Change Title button. That title is displayed within the Start Menu droplist
- e) The Shortcut Key can assign a hotkey to execute this Start Menu item via a CTRL key sequence (e.g. CTRL+Alt+F6). You can select a hotkey here.
- f) Click OK to save your changes

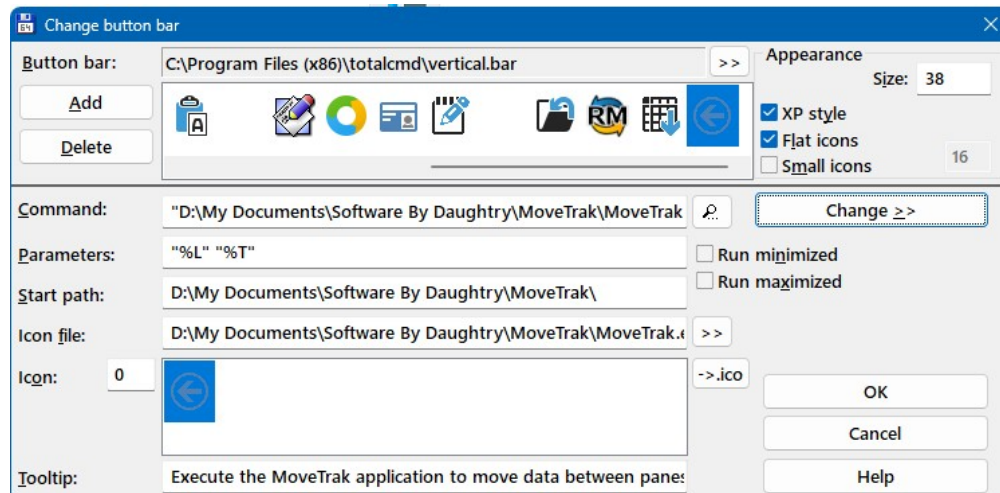
## 2. Middle Toolbar

- a) Right click the mouse on any unused space within the middle toolbar; a popup menu will appear



Select the "Change vertical button bar" menu item

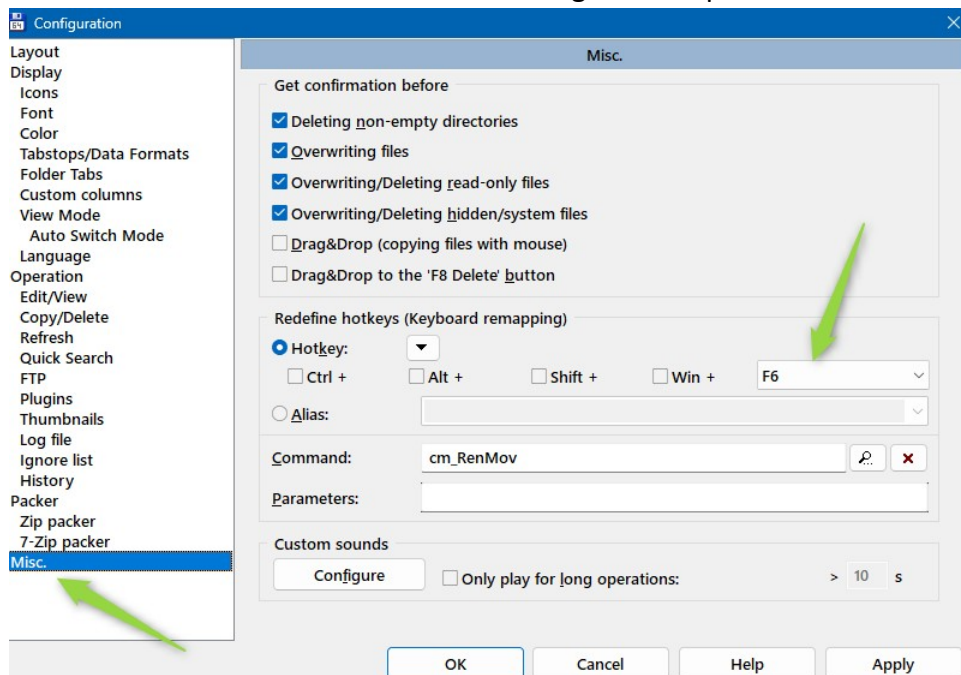
- b) A popup window will appear



- c) The first three entry fields are identical to those used in the Start Menu; populate them the same. MoveTrak has an embedded icon (a left arrow within a circle) that is selected by default for the middle toolbar button image. You can select a different .ICO file if desired. The Tooltip entry field is optional, and is displayed when the mouse cursor is hovered over the button.
- d) Click OK to save

If you wish to assign a different hotkey (e.g. F6) to MoveTrak, follow these steps:

1. Click 'Configuration' from the Total Commander main menu
2. Select "Options" from the menu droplist
3. Click "Misc." from the left selection of configuration options



4. Click the droplist to the right of the "Win +" text; a droplist of all keyboard characters is displayed. Select the designed keyboard key that will become the



MoveTrak hotkey (F6 is chosen in this example)

5. Click the lookup button with a search icon displayed within it:

Redefine hotkeys (Keyboard remapping)

Hotkey:  Ctrl +  Alt +  Shift +  Win + F6

Alias:

Command: Default command (no remapping)  

Parameters:

6. Within the Category picklist (left side), select the "User" entry:

Choose command

Category:	Command:	Nr:	Description:
Help	Default command (no remapping)		
Window	cm_UserMenu1	701	Start first menu item in Start menu
Command Line	cm_UserMenu2	702	Second item
Tools	cm_UserMenu3	703	Third item
View	cm_UserMenu4	704	etc.
User	cm_UserMenu5	705	
	cm_UserMenu6	706	
	cm_UserMenu7	707	
	cm_UserMenu8	708	You can add more
	cm_UserMenu9	709	custom user menu ids
	cm_UserMenu10	710	in totalcmd.inc!

Filter:



OK Cancel

7. Select the "cm\_UserMenu" item number that matches the new Total Commander start menu entry that was defined in this screen:

Change start menu

Start menu: 7

- DirTrak (F7)
- Dir2Text
- NewText (F4)
- RenameTrak (F2)
- RenameMaster (Alt-M)
- Tag And Rename (Alt-T)
- MoveTrak
- XnConvert (Image Converter)(Alt-I)

Command: D:\My Documents\Software By Daughtry\MoveTrak\MoveTrak.exe  

Parameters: "%L" "%T"

Start path: D:\My Documents\Software By Daughtry\MoveTrak\

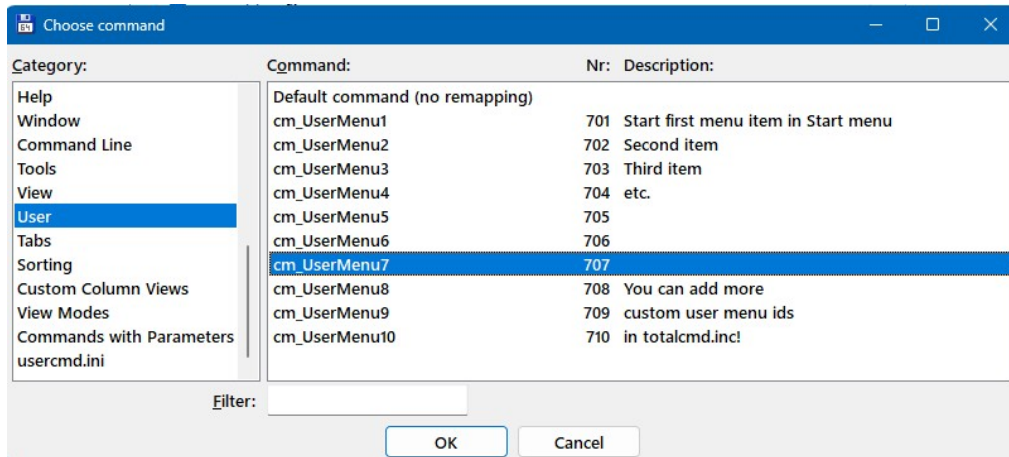
Shortcut key: (none)

run minimized  maximized

? as the first parameter: invokes dialog to enter parameters  
%p: inserts actual source path %t: the actual target path  
%n: inserts file name under the cursor %%: the percent sign

Change Title...  
OK  
Cancel  
Help

For this example, item #7 was used, so "cm\_UserMenu7" will be used

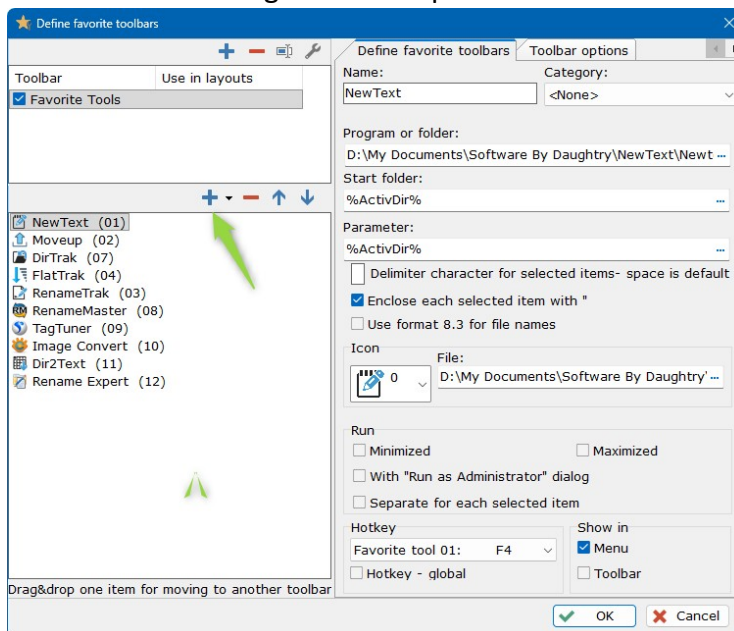


8. Click OK, then click OK again to close the Configuration window

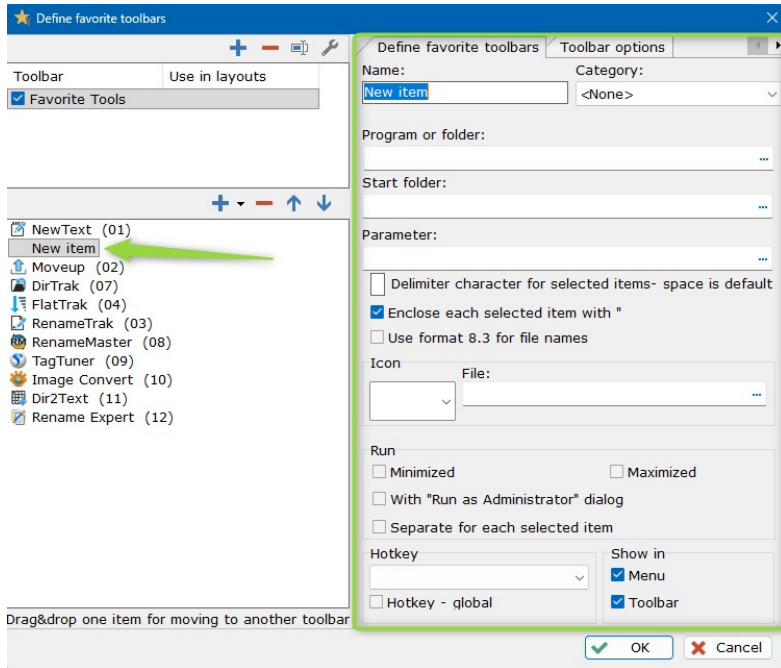
## Configuration (FreeCommander)

There are two steps to integrate MoveTrak into FreeCommander: add a FreeCommander Favorite Tools entry (to enable a hotkey to be assigned to MoveTrak) and adding a middle toolbar button (optional).

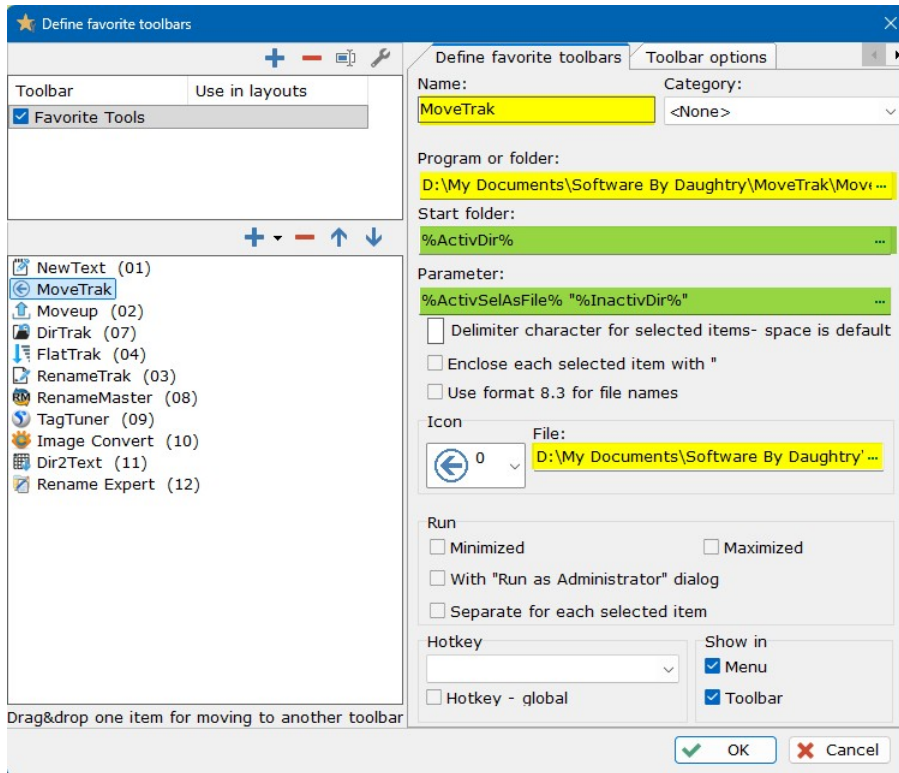
1. Add MoveTrak to the FreeCommander Favorite Tools list
  - a. Select TOOLS from the FreeCommander main menu, then FAVORITE TOOLS, then FAVORITE TOOLS EDIT. A window similar to this will appear onscreen. Click the "+" button that the green arrow points to:



- b. A new entry is added to the left pane, with the configuration pane to the right ready to be populated:



c. Populate the highlighted entry fields:



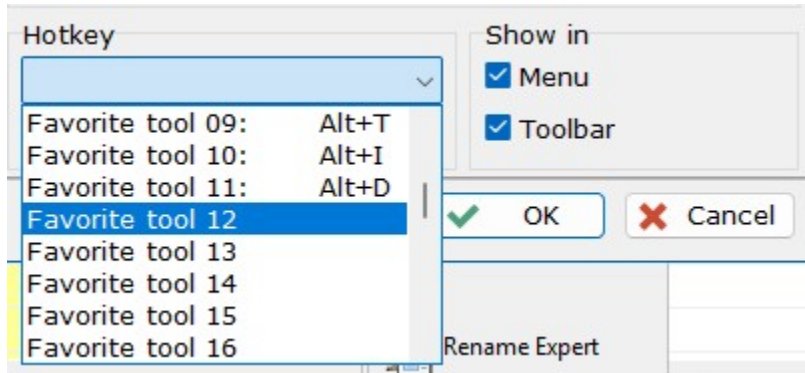
Yellow = your entry can/will be different (e.g. you installed MoveTrak to a destination folder different than the example above)

Green = your entry MUST match exactly (copy/paste from below into yours)

Start Folder: **%ActivDir%**

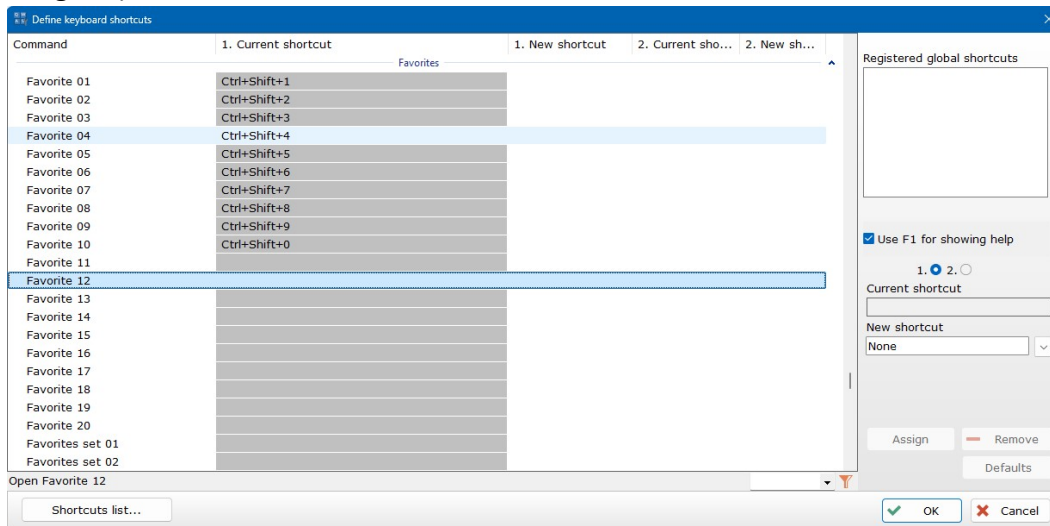
Parameter: `%ActivSelAsFile% "%InactivDir%"`

- d. The “HotKey” droplist must be selected; click the droplist to display the current HotKey associations, and then select one that is inactive for MoveTrak:

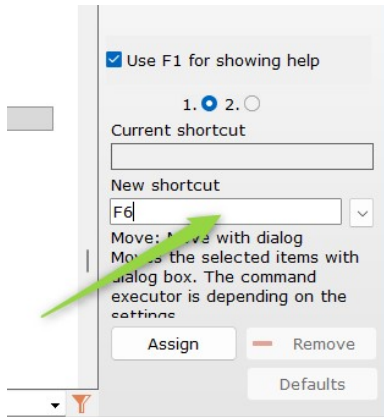


Note: to NOT click the HotKey – Global checkbox; otherwise, when FreeCommander is running that HotKey is active in any other running Windows application (and will override their HotKey).

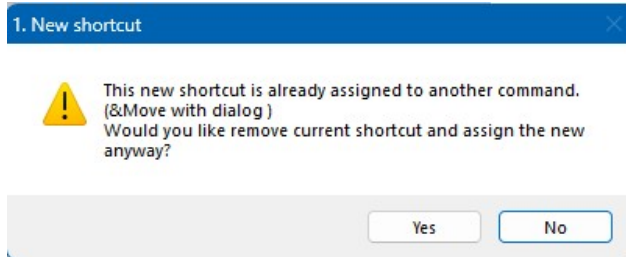
- e. Click OK to save
- f. Select the TOOLS, then DEFINE KEYBOARD SHORTCUTS menu item. Scroll down the list to locate your Favorite Tool # (for this example, Favorite Tool 12 was assigned):



- g. Left click the New Shortcut entry field to activate, then press the preferred HotKey combination to associate it with MoveTrak (example below shows F6 being assigned), then click the ASSIGN button:



If that HotKey is currently assigned, a warning message is displayed:

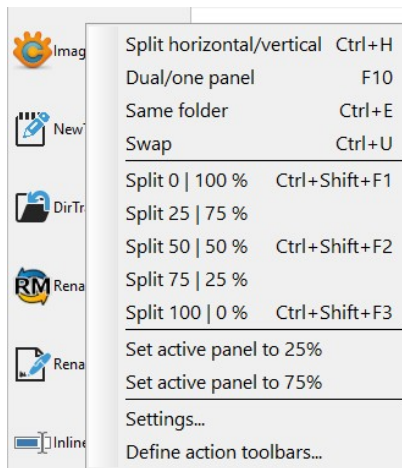


Click YES to override, NO to assign a different HotKey

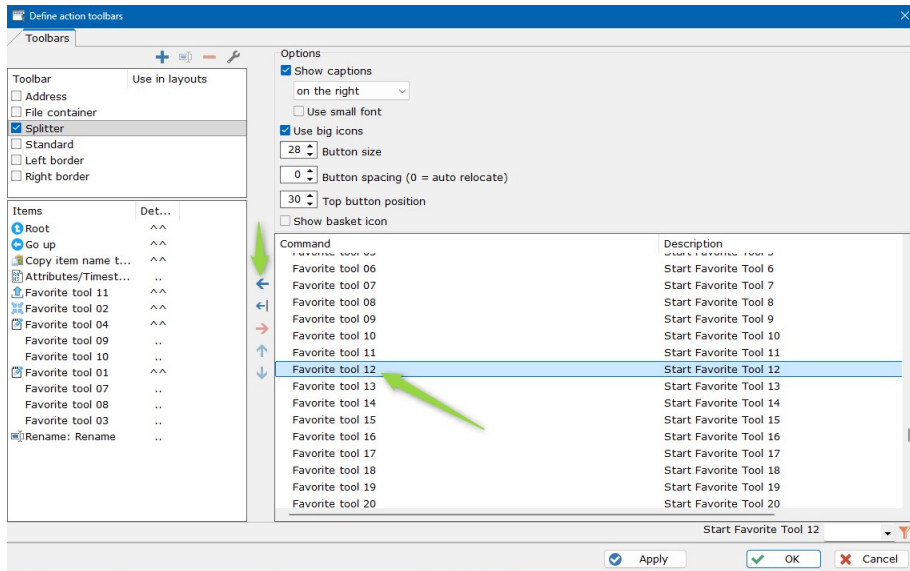
h. Click TOOLS from the main menu, then SAVE SETTINGS

2. Add a middle toolbar button for MoveTrak

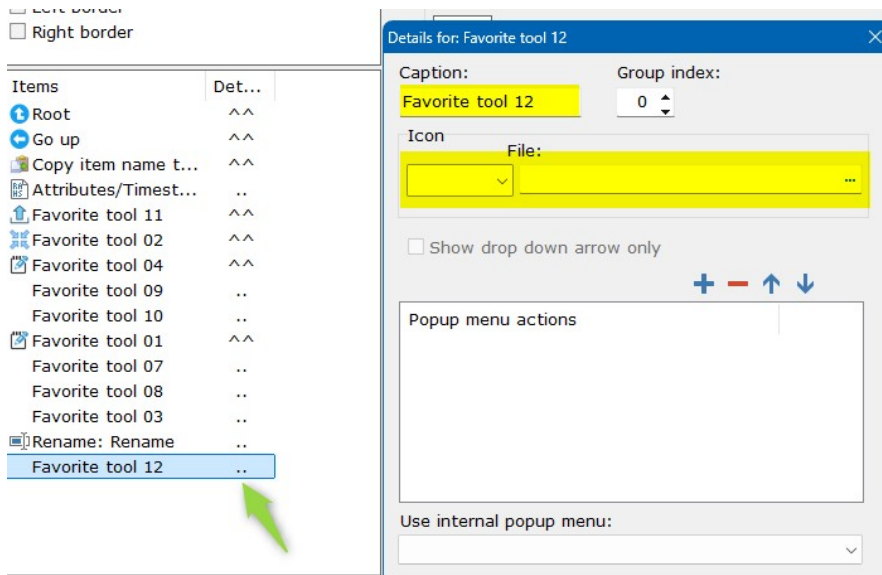
a. Right click anywhere in an unoccupied middle toolbar space, then select DEFINE ACTION TOOLBARS... from the popup menu:



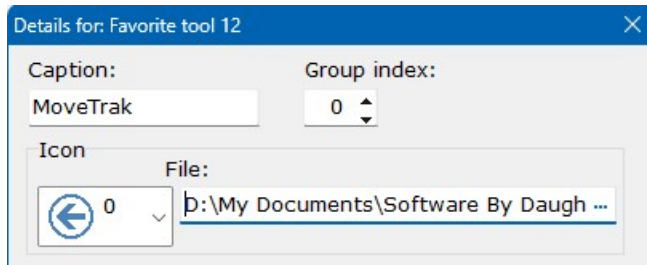
b. Within the Command section of the window, scroll down to locate the newly added Favorite Tool # (for this example, it was Favorite Tool 12), then click the blue left-pointing arrow to add it to the middle toolbar:



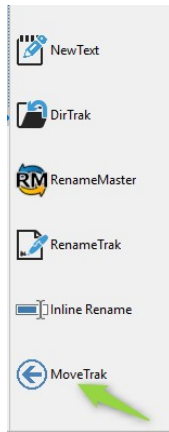
- c. Click the button displayed to the right of the new middle toolbar entry to display the “Details for” screen:



For this example, the three items were configured as:



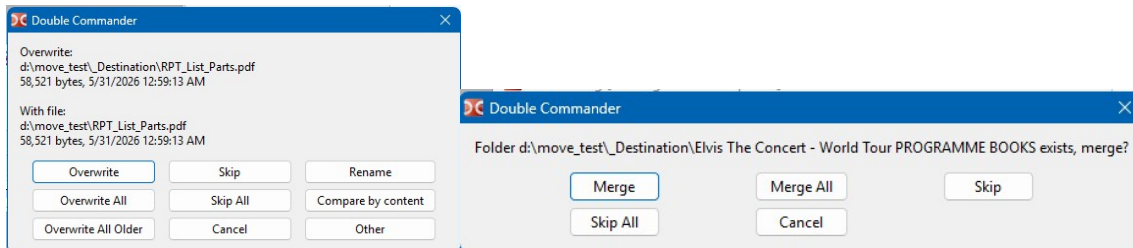
- d. Click OK to save  
 e. Click APPLY, then OK to enact the change to the middle toolbar and close the window. The newly added middle toolbar button is now displayed:



f. Click TOOLS, then SAVE SETTINGS

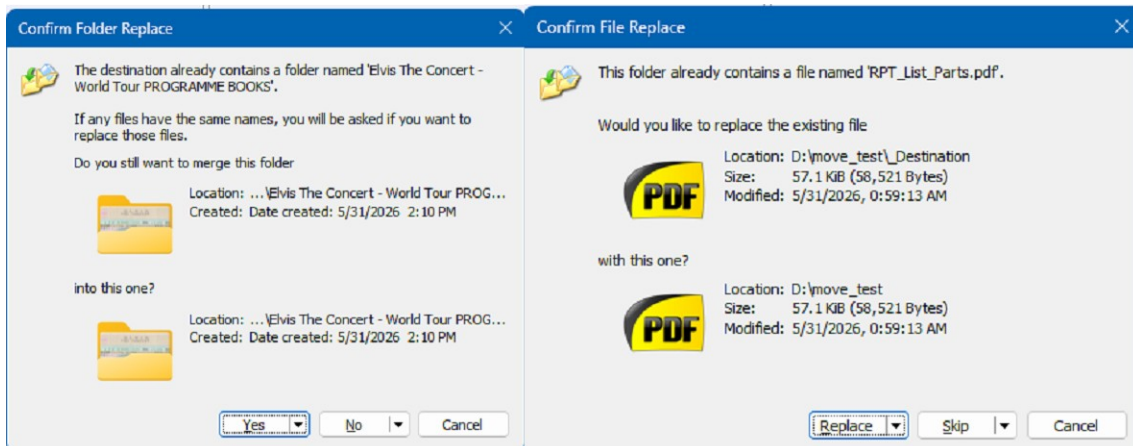
## Configuration (Double Commander)

MoveTrak is an unnecessary addition to Double Commander, as it already conducts collision detection between SOURCE and DESTINATION and will immediately display a popup message if it detects a collision:



## Configuration (SpeedCommander)

MoveTrak is an unnecessary addition to SpeedCommander, as it already conducts collision detection between SOURCE and DESTINATION and will immediately display a popup message if it detects a collision:



## Technical Information

This application requires less than 5MB of disc space for its files:

- MoveTrak.exe – application file
- MoveTrak.ini – configuration file (editable with Notepad or a text editor)
- WBDWC64I.Dll – runtime file

However, whenever processing large volumes of data, three factors come into play:

1. CPU processor speed
2. Hard drive type/speed (5400RPM / 7200RPM / SSD)
3. Available memory (ideally 16GB or more RAM installed)

It is recommended to close all Windows applications (especially web browsers) before processing large amounts of data to free up memory. A faster hard drive can shave minutes (or even hours) of time required to process data.

## How MoveTrak Works

Step 1: MoveTrak reads the list of selected files and folders.

Step 2: MoveTrak checks whether any destination item already exists.

Step 3: If a collision is detected, MoveTrak aborts the operation before moving any data.

Step 4: If no collisions are detected, MoveTrak launches FastCopy to perform the move operation.

## Collision Detection

Example:

Source: D:\Music\Original

Destination: D:\Archive

If:

D:\Archive\Original

already exists, MoveTrak aborts the operation. No files or folders are moved. This behavior prevents accidental folder merges.

## Error Messages

- Should MoveTrak encounter a problem with data movement, a popup dialogue is displayed onscreen with one of the following messages:
- Destination Collision: One or more destination items already exist. MoveTrak aborted the operation before moving any files or folders.
- Missing Source Item: One or more source items could not be found. MoveTrak aborted the operation before moving any files or folders.
- FastCopy Not Found: FastCopy executable not found. Verify the FastCopyEXE entry in MoveTrak.ini.

## Support and Registration/Donation

1. Send us an email ([scott@sdaughtry.com](mailto:scott@sdaughtry.com)) that fully describes the problem(s) you're experiencing and we will get back to you as soon as possible. It is prudent for you to fully back up this application's folder (in full) as a precautionary pre-troubleshooting step.
2. This application is distributed as DONORWARE – no features have been removed or crippled from this application. This application's dedicated web page located on our company web site (<http://www.sdaughtry.com>) has a link to donate to continued updates of this application and/or fund the creation of other utility applications.

## Appendix A (FastCopy)

MoveTrak leverages FastCopy as its underlying file transfer engine.

FastCopy is a free, high-performance file copy and move utility developed specifically for Microsoft Windows. It is widely regarded as one of the fastest file transfer utilities available and is capable of handling large file collections efficiently.

FastCopy download: <https://fastcopy.jp>

MoveTrak does not include FastCopy. Users must download and install FastCopy separately.

## Appendix B (Why FastCopy?)

During development, several file transfer utilities were evaluated.

FastCopy was selected because it provides:

- High-speed file and folder transfers
- Command-line operation
- Silent execution support
- Automatic application closure upon completion
- Reliable handling of large file collections
- Support for moving both files and folders

These capabilities make FastCopy an excellent transfer engine for MoveTrak.

## Closing Note

MoveTrak does not rely upon FastCopy to determine whether destination files or folders already exist.

Before FastCopy is launched, MoveTrak performs its own collision detection process.

If any destination file or folder already exists, MoveTrak aborts the operation before any files or folders are moved.

This behavior prevents accidental file and folder merges. In other words:

- FastCopy performs the transfer.
- MoveTrak enforces the safety rules.