



NewText

User Guide

Version 1.0

March 2026

Scott Daughtry

Software by Daughtry

Complexity Made Simple

Contents

Version History	3
Introduction	4
System Requirements	4
U.S. Government Use	4
Why NewText?	4
How It Works	4
Configuration	5
File Manager Integration	5
Double Commander	5
FreeCommander	6
SpeedCommander	9
Total Commander	12
Technical Information	12
Support/Donation	12

Version History

Version	Description
1.0	Initial release

Introduction

NewText is a small Windows-compatible utility application to create an empty text file in the currently selected directory and then open it with a pre-defined editor.

System Requirements

- Windows 8 (or higher)
- All Windows applications “like” computer memory – a starting point for any Windows machine should really be 16GB of memory. If this application starts running slower, check your Windows Task Manager for applications that are leeching memory (and then start closing them)
- This application runs comfortably within 10MB of disc space
- A decent color monitor capable of displaying 1024x768 (or higher resolution)

U.S. Government Use

U.S. government agencies, to include the Department of Defense, are NOT permitted to use this application without written consent from the author. A per-seat usage fee will be assessed prior to that written authorization being granted to the requester.

Why NewText?

Most file manager applications include the capability to create a new text file in the currently selected folder. The author has five such applications installed on several PCs, and became frustrated that none of them would (a) create a text file using a predefined name and then (b) immediately open the new text file for editing. They also did not first check if the file already existed in the destination folder (and then rename the new text file to a unique filename). There may also be instances when the default application assigned to all .TXT files isn't the editor that was desired (e.g. Notepad is the default, but SlickEdit was preferred). The NewText utility program was then created to address this shortcoming.

How It Works

The calling File Manager software application (e.g. Total Commander) must be configured to pass the desired path to the NewText application. That path is checked to ensure it contains a trailing slash – if one is not detected, one is appended to the directory name that was passed to NewText. When the NewText.Exe file is started, the NewText.Ini file is opened and read; the Filename and Editor values are retrieved. The predefined output file is checked for its existence – if found, the computer's date and time are retrieved and then appended to the predefined filename to create a unique file. The file is then created in the directory – a line of text is

automatically added to the new file to distinguish it from other text files that may be located within the folder – the file is then opened with the predefined editor and the NewText application is closed.

Configuration

NewText uses a .Ini file to define what two things: the default filename for the new text file and the location/name of the file editor software application: The .Ini file construct is this:

[Main]

FileName=<filename here>

EditorName=<path + utility filename here>

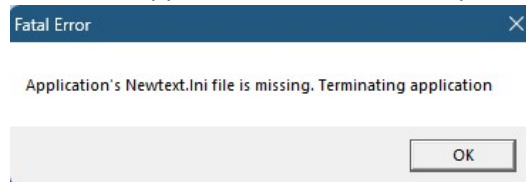
A sample configuration would resemble:

[Main]

FileName=Info.txt

EditorName=C:\Program Files\SpeedProject\SpeedCommander 21\SpeedEdit.exe

If there is no NewText.Ini file located in the same folder as the NewText.exe file a dialog window is displayed onscreen before the application terminates early:



Note: the NewText installation file includes a preconfigured Newtext.ini file; within the file there are several text editors defined that can be copied/pasted into the EditorName section of the Newtext.ini file. The path locations for these text editors were the default locations on the author's system – your computer may be different if you installed the same application elsewhere on your machine.

File Manager Integration

This application has been tested with three Windows file management applications (FreeCommander, SpeedCommander, and Total Commander).

Double Commander

Enable the middle toolbar (Options->Layout->Screen Layout->Show middle toolbar). Right click anywhere within the middle toolbar and select 'Edit' from the popup menu. Click the button titled 'Insert new button'. Populate the entry fields for Icon, Tooltip, Command, Parameters, and Start Path as depicted in the below screen capture:

The image shows a configuration window for FlatTrak. On the left, under 'Button type', the 'External command' radio button is selected. The main area contains the following fields and controls:

- Icon: D:\My Documents\NewText\Newtext.exe
- Tooltip: Edit New Text File
- Command: D:\My Documents\NewText\Newtext.exe
- Parameters: %/1%D
- Start path: %Ds
- Hot key: F4, with 'Edit hotkey' and 'Remove hotkey' buttons.

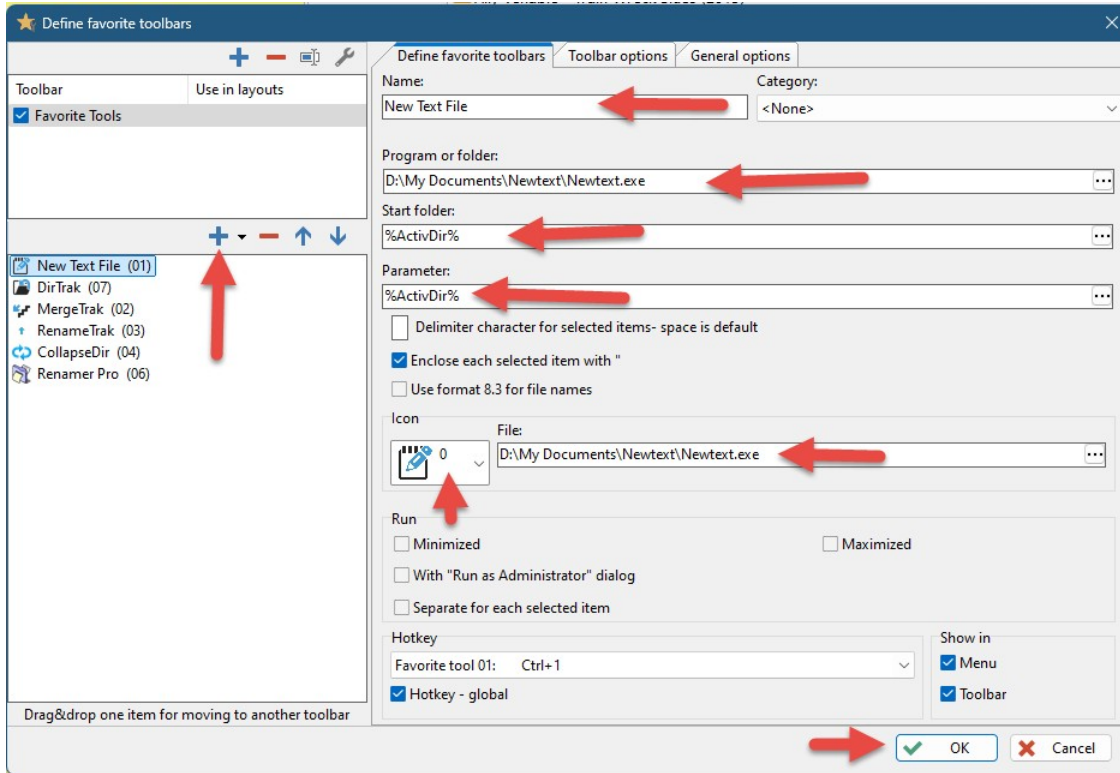
At the top right, there are three buttons: 'Insert new button', 'Clone button', and 'Delete'.

Click the OK button to save the middle toolbar settings and display a FlatTrak button onscreen.

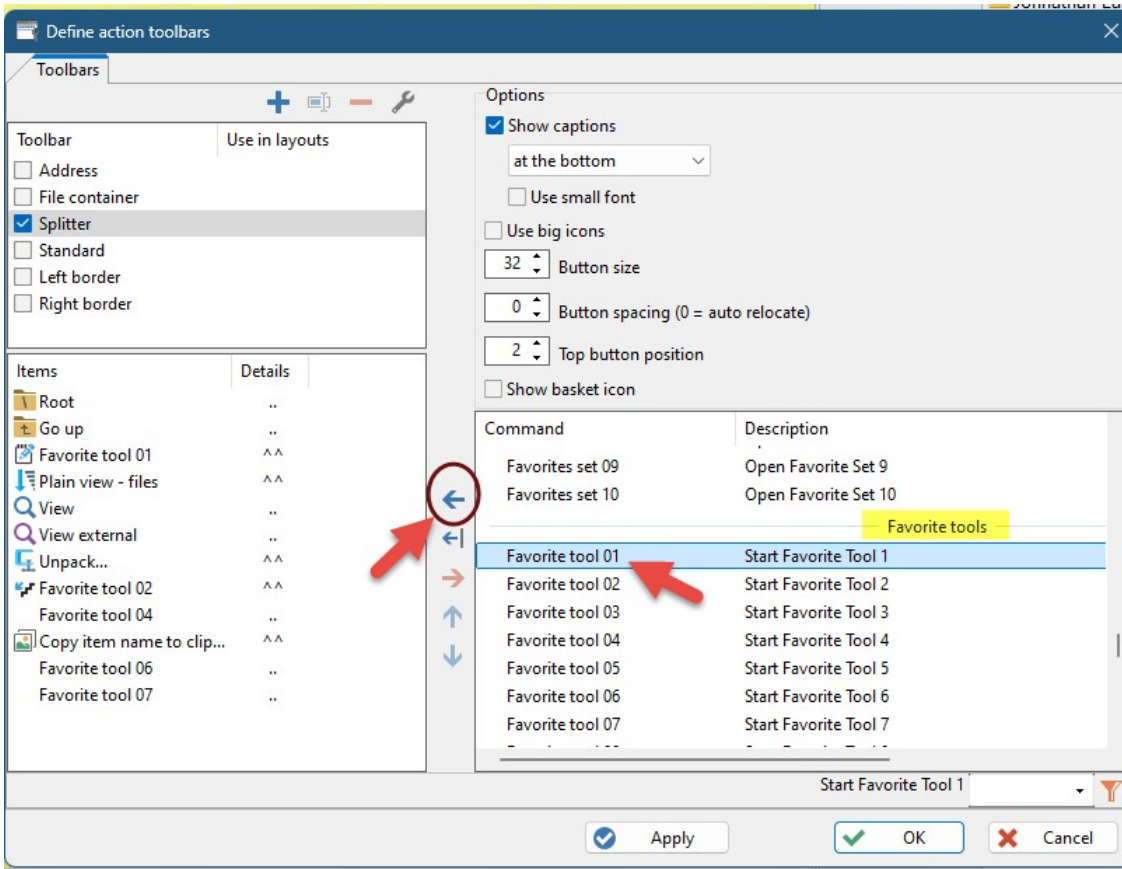
You can select a different icon (e.g. a .ICO file) that you have stored on the hard drive if desired; an icon is embedded within FlatTrak that is used in the above example. You may change the Tooltip to something different – however, be aware that Double Commander will also display that tooltip text to the right of the icon which will widen the middle toolbar. The correct parameter that is passed from Double Commander to FlatTrak is **%D** – do not enter anything different! You can optionally assign a Hotkey to execute FlatTrak (if desired) in the Options screen by clicking the Edit Hotkey button.

FreeCommander

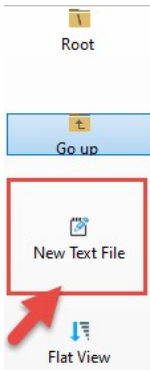
This is a 2-step process – after adding the NewText as a ‘Favorite Tool’, a button is added to the ‘Action Toolbar’. Click ‘Tools’ from the main menu, then ‘Favorite Tools’, then ‘Favorite Tools Edit’ (or press CTRL-SHIFT-Y). Add a new entry (blue-colored icon), and then fill in the entry fields that are spotlighted below with red arrows (and then click the OK button to add NewText as a Favorite Tool):



With the new Favorite Tool added for NewText, right click within unused space in the Action Toolbar space and then select the popup menu option titled 'Define Action Toolbars'. Scroll down to the section titled "Favorite tools", select the favorite tool associated with the NewText favorite tool (in this example, Favorite Tool 01 is associated), then click the left arrow to add it to the Action toolbar:

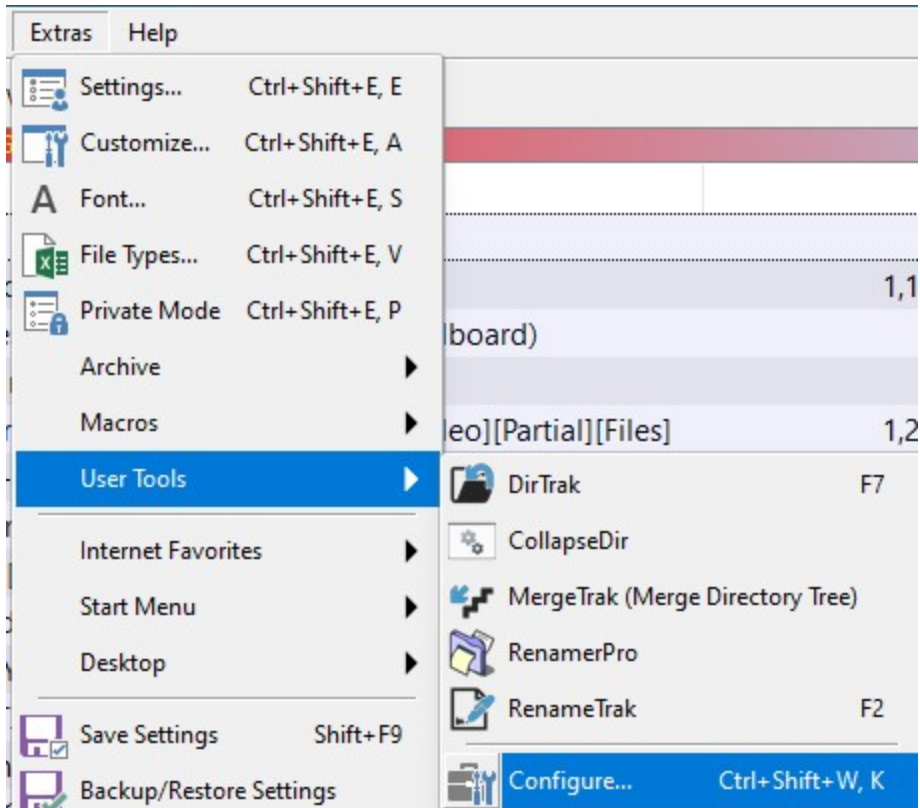


Move the newly added tool up/down to its desired location within the Action toolbar, then click the OK button to save the Action toolbar. A new button is now added within the Action toolbar for the NewText favorite tool:

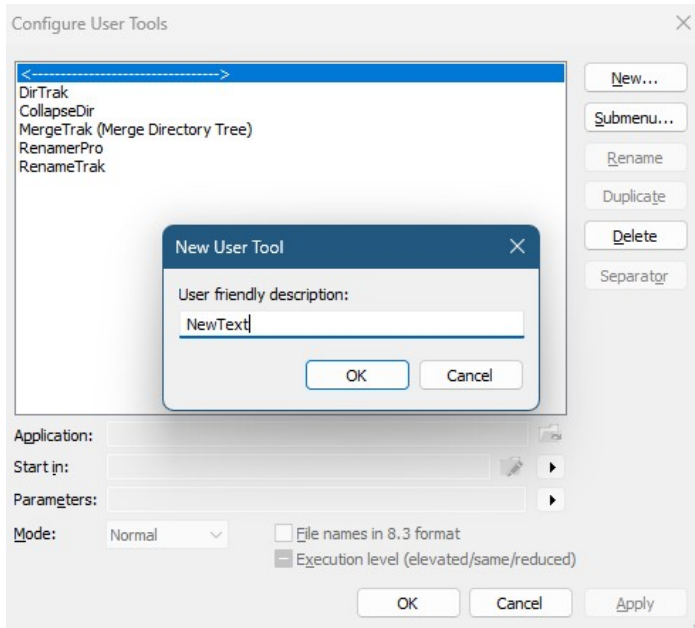


SpeedCommander

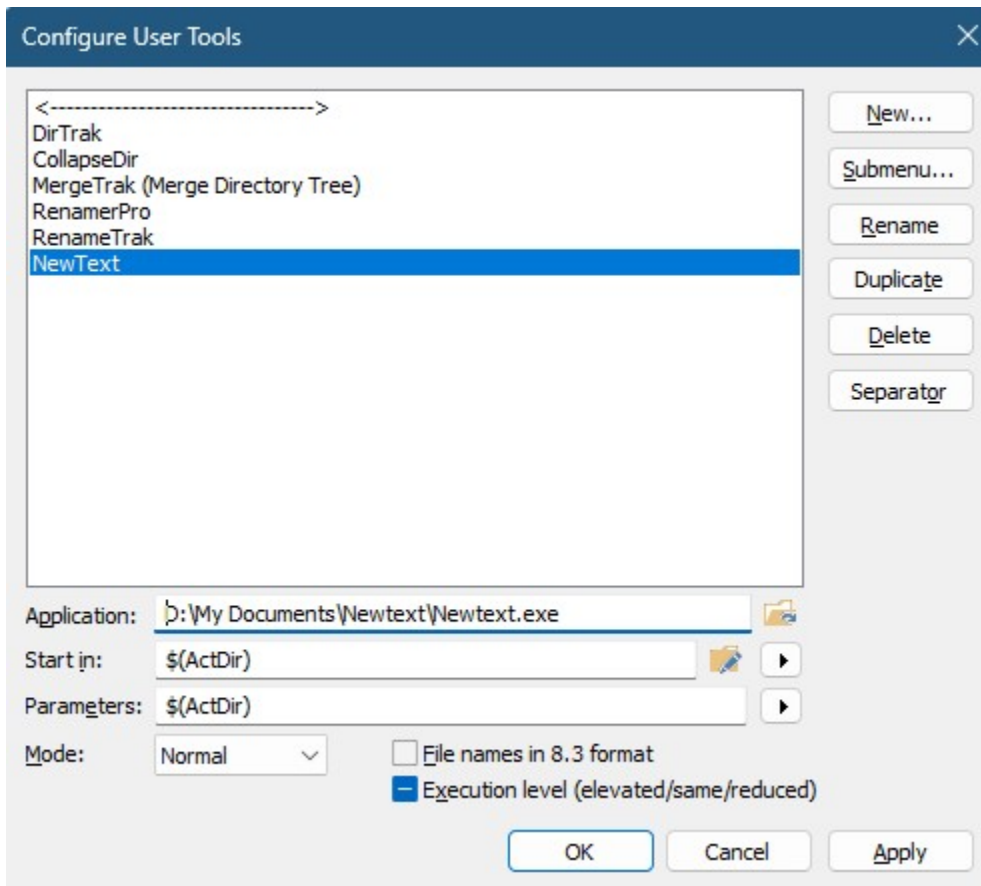
This is a 2-part process (add NewText as a User Tool, and then adding it to the toolbar). From the main menu, select Extras, then User Tools, then Configure (or press CTRL+SHIFT+W, K:



When the Configure User Tools window appears, click the New button; a popup window appears – type in 'NewText' as the tool's name and then click OK:

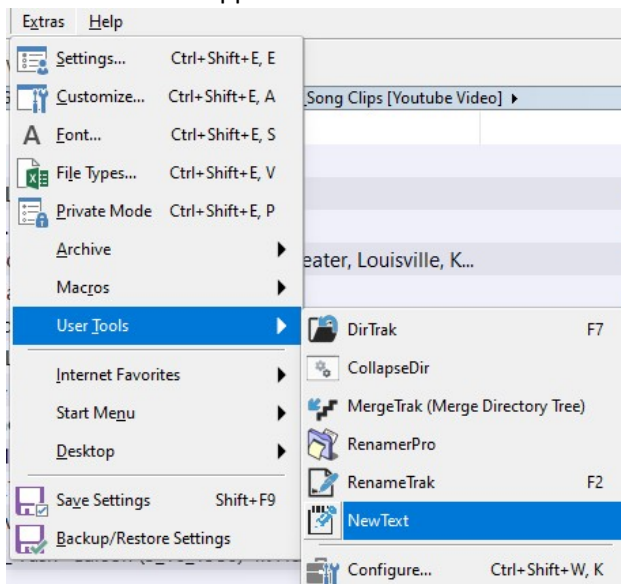


Drag the new entry to the bottom of the list and then “fill in the blanks” for the settings:

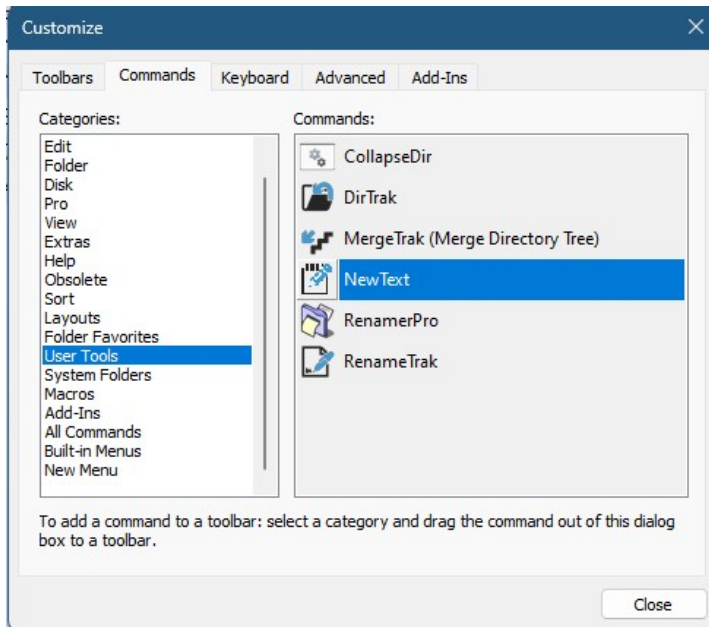


Select the NewText.Exe file within the folder that you installed it into; enter **\$(ActDir)** for both the Start In and Parameters entry fields. Click OK to save the settings. A new menu item appears

for the NewText application within the User Tools menu:



Right click the toolbar and select the popup menu item 'Customize', which displays a popup window:

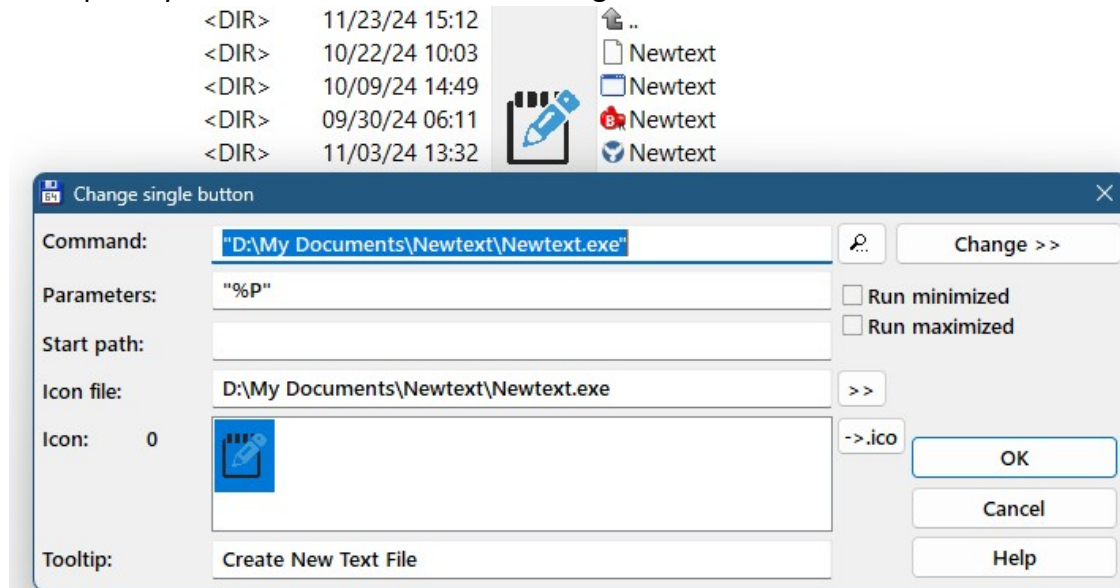


Click the 'Commands' tab, then select 'User Tools'. Left click the entry titled 'NewText' and drag it into the toolbar to its desired location within the toolbar, then click the Close button; a new toolbar button appears:



Total Commander

Add a new button to the Vertical Button Bar. Within the Command entry field, enter the path to the NewText.exe file. For the Parameters entry field enter "%P". Leave the Start Path entry field blank. The NewText.exe contains a .ICO file that can be used (or you can manually assign a .ICO file to use instead). Enter your preferred Tooltip text within the Tooltip entry field. Click OK to save the settings:



Technical Information

This application requires less than 5MB of disc space for its files:

- NewText.exe – application file
- NewText.ini – configuration file (editable with Notepad or a text editor)
- WBDXB64I.dll – runtime file

Support/Donation

1. Send us an email (scott@sdaughtry.com) that fully describes the problem(s) you're experiencing and we will get back to you as soon as possible. It is prudent for you to fully back up this application's folder (in full) as a precautionary pre-troubleshooting step.
2. This application is distributed as DONORWARE – no features have been removed or crippled from this application. This application's dedicated web page located on our company web site (<http://www.sdaughtry.com>) has a link to donate to continued updates of this application and/or fund the creation of other utility applications.